

## In This Issue

<b>Editorial – the future of the Hampshire Flora Group</b> .....	1
<b>Forthcoming Events</b> .....	3
<b>Reports of Recent Events</b>	
Flora Group/BSBI exhibition meeting and AGM, 6 December 2025 <i>John Norton</i> .....	6
BSBI New Year Plant Hunt, Chandler's Ford, 2 January 2026 <i>Martin Rand</i> .....	7
<b>Notes and Features</b>	
The new GB vascular plant red list is out <i>Neil Sanderson</i> .....	9
Updates to the Hampshire Notables list <i>Martin Rand</i> .....	10
Churchyard botany projects <i>Margaret Wonham</i> .....	11
Opposite-leaved Pondweed <i>Groenlandia densa</i> rediscovered on the River Ems – a glimmer of hope for a disappearing plant? <i>Tristan Norton</i> .....	13
<b>Book Reviews</b>	
Wild Roses of Great Britain and Ireland <i>Tony Mundell</i> .....	18
<b>Recording</b>	
The Flora of Hampshire Supplement <i>Martin Rand and Tristan Norton</i> .....	19
VC11 notes and records summary <i>Tristan Norton</i> .....	20
VC12 records <i>Tony Mundell</i> .....	26

## Editorial – The future of the Hampshire Flora Group

**A**s mentioned in the last issue we have now said goodbye to Catherine and Clive Chatters who have moved to Suffolk and we would like to thank them again for their huge contribution to the running of the Flora Group over the last 34 years (the first *Flora News* came out in autumn 1991). Cathy Wilson has also left the Flora Group committee and at the recent AGM held at our December exhibition meeting Martin Rand officially announced that he is stepping down as a committee member to concentrate on compiling the Supplement to the *Flora of Hampshire* (see pp. 6 & 19). Consequently, we are now desperately short of committee members, despite Martin's plea in the last issue and a lack of uptake following a presentation by Martin at the AGM. Current members of the committee have agreed to cover the various roles in an acting capacity for the time being, but if anyone is interested in taking on a post longer term please contact the acting Hon. Secretary (or any committee member) to put your name forward. The current members are Tristan Norton (acting Chair), Nick Aston (acting Hon. Secretary ([drnickaston@gmail.com](mailto:drnickaston@gmail.com)), Tony Mundell, Neil Sanderson, John Norton (*Flora News* Editor), Gareth Knass, Andy Cross and Isobel Girvan. We are also looking for a Treasurer and Membership Secretary (these could be separate or combined) and possibly also someone to become Receiving Editor for *Flora News*.

Other issues have arisen in recent months which have served to complicate the running of the Flora Group and so in view of the lack of recruitment to the committee and because of these other issues it is with regret that we must announce that it is no longer possible for us to operate as a species group of the Hampshire & Isle of Wight Wildlife Trust. Martin's presentation at the AGM set out the pros and cons of staying with or parting from the Trust and although nothing was voted on at the meeting the overwhelming majority of the audience agreed that we should leave (see write-up on p. 6). This of course will have several serious implications, including that we will no longer have the benefit of the Trust covering our public liability insurance or providing the use of their buildings and facilities for free for holding meetings and workshops. It also means that we may have to re-form as a society and charge a membership fee to cover these costs. However, our separation from the Trust won't be ratified until we hold an extraordinary committee meeting, probably in February, and it is yet to be decided what form the Hampshire Flora Group will take in the future.

This edition of *Flora News* will therefore be last in the present format. Nevertheless, we intend to continue to produce twice-yearly issues, **so it is important that all members contact us to let us know if they wish to continue to receive *Flora News* and provide email contact details (see below)**. We also intend to run a programme of field meetings this year (see Forthcoming events, p. 3), but until a new Flora Group is officially established and is insured, these will be run either as local meetings of the BSBI or on a 'group of friends' basis, so please be aware that if you attend a field meeting this year it may be at your own risk.

As usual we welcome your suggestions for future Flora Group events and encourage you to raise your ideas with the committee. Please send future contributions for *Flora News* to John Norton ([john@jnecology.uk](mailto:john@jnecology.uk)) by 31 August 2026. We all hope you will enjoy some fruitful botanising in 2026.

John Norton (*Flora News* Editor) and Nick Aston (acting Hon. Secretary)

### IMPORTANT – IF YOU WISH TO RECEIVE FUTURE COPIES OF FLORA NEWS:

- Send an email to [hampshirefloragroup@gmail.com](mailto:hampshirefloragroup@gmail.com) with the address line 'Flora News'.
- In the message body state your name (given name and surname) and (optionally) your county of residence (we will use this to find out what proportion of members are resident in Hampshire).

**Please note** that we will use the email contact you have provided to keep you in touch with any future developments of the group as well as for sending out copies of *Flora News*. Messages will be acknowledged with an automated reply, so if you have any urgent queries please contact John Norton directly ([john@jnecology.uk](mailto:john@jnecology.uk)). If you know of anyone who usually receives a printed copy of *Flora News*, please let them know that they need to contact us (please contact us on their behalf if they don't have access to a computer – we don't know if we'll be able to continue sending out printed copies in the future).

**Cover photo: Opposite-leaved Pondweed *Groenlandia densa* at the Bedhampton springs outfall, Havant (see article, p. 13). Tristan Norton**

## Forthcoming Events

The following is a provisional list of field meetings planned for 2026. Keep an eye on the Hants Plants website ([hantsplants.uk](http://hantsplants.uk)) for other meetings arranged at short notice. While the status of the Hampshire Flora Group is in limbo some of these will not be covered by the Trust's insurance or subject to their health and safety policies; therefore anyone attending meetings should bear in mind that this will be at their own risk (we will provide health and safety advice at the start of each meeting).

**Please register with the meeting leader in advance and provide contact details in case of cancellation. Bring a packed lunch, drink and suitable footwear and clothing to all field meetings.**

In addition to the meetings listed below Tony Mundell has set provisional dates for square-bashing visits this year in VC12 and Martin Rand will add his in due course for VC11. See the Hants Plants website calendar for further details and contact Tony or Martin if you are interested in attending one of these.

**Saturday 21 February, 10.30am–1pm**

**Fleet Cemetery**

**Leader: Tony Mundell ([VC12recorder@hantsplants.net](mailto:VC12recorder@hantsplants.net))**

This half day meeting is mainly to see what different species or hybrids of Snowdrops *Galanthus* that we can find. In the past I have recorded several taxa there, including Green Snowdrop *G. woronowii*, Pleated Snowdrop *G. plicatus* and Greater Snowdrop *G. elwesii*. Early Crocus *Crocus tommasinianus* should also be in flower. We will be too early for the Heath Dog-violet *Viola canina* that has also been recorded, but that does indicate that there is some good quality acid grassland habitat around the gravestones.

Joining instructions will be sent a week or so before the event.

**Sunday 7 June, 10am–4pm**

**Brambles for beginners, Blackwell and Badminton Commons, New Forest**

**Leader: John Norton ([john@jnecology.uk](mailto:john@jnecology.uk))**

We last visited these two commons in the south-east of the Forest back in 2010 when David Allen led a combined meeting with the Southampton Natural History Society. It will be an opportunity to see several of the typical heathland brambles of Hampshire and southern Britain generally but also a few more localised ones of south-west England which only just reach the county, including (possibly) *Rubus altiarquatus*, *R. curvispinosus*, *R. questieri* and *R. rilstonei*. The date will also be ideal to see one or two of the earlier flowering Section *Rubus* (Suberecti) species. We will look at Blackwell Common in the morning and if time, combine in as few cars as possible and head over to Badminton Common in the afternoon, where parking is limited. Of course this will also be a good time to see smaller acid grassland plants in flower, especially clovers.

Meet at the Blackwell Common Forestry England car park at SU436015 (off Exbury Road, between Blackfield and Exbury). By the time of the meeting car parking charges are expected to have been introduced in the New Forest, but it is not yet known how much they will be.

**Saturday 20 June, 10am–3pm**

**Foley Manor estate, Liphook**

**Leader: Tony Mundell ([VC12recorder@hantsplants.net](mailto:VC12recorder@hantsplants.net))**

This is a large estate covering hundreds of acres that include parts of VC12 North Hampshire and VC13 West Sussex. I have recently been making species lists of the plants present for the new owner, who is keen to re-wild some parts of it. Botanically the richest areas are marshy fields, and we will certainly see large numbers of Southern Marsh-orchid *Dactylorhiza praetermissa*. There are also a few Heath Spotted-orchids *D. maculata* and hopefully even the hybrid between them. Be prepared for some very wet ground – I will certainly wear my wellington boots.

Other interesting plants include Marsh Willowherb *Epilobium palustre*, Ragged-Robin *Silene flos-cuculi*, and a few plants of Bog Pimpernel *Lysimachia tenella*. There are areas of former heathland now becoming overgrown



with secondary woodland. I am hoping that we can get close enough to glimpse Great Fen-sedge *Cladium mariscus* in its only remaining VC12 site (see p. 30), though it was probably originally planted. Its last native VC12 site was at Greywell Fen but was lost decades ago. We may also be able to see an abundance of the highly invasive Lizard's-tail *Saururus cernuus*, though it will not be in flower that early (see p. 36). For information about this plant see *BSBI News* 83, January 2000, pp. 40–41 (accessible online via the *BSBI News* archive: [bsbi.org/publications/archive/bsbi-news-archive](https://bsbi.org/publications/archive/bsbi-news-archive)).

Joining instructions will be sent a week or so before the event.

### Friday 26 June, 5pm–8.30pm

#### Wootton Bridge area, New Forest – heathland orchids and New Forest specialities

Leader: Tristan Norton ([vc11recorder@hantsplants.net](mailto:vc11recorder@hantsplants.net))

A summer evening visit to the valley of the Hampshire Avon to explore a rich seam of special plant species. From the car park at Wootton Bridge we will move eastwards across the road to explore an area of scrubby heath. On the tightly-grazed lawns and verges we should come across species such as Small Cudweed, Lesser Centaury and other grassy heath species.

In a nearby area of Bracken-dominated heath we will search for the magnificent Wild Gladiolus as well as Lesser Butterfly-orchid (several plants with a beautiful mutation have occurred here in recent years).

We will then move back westwards to more Bracken heath where we will look for Soft-leaved Sedge and more Gladiolus and, on wetter heath, orchids such as Early Marsh-orchid and Heath Spotted-orchid. If we are feeling intrepid, we can try to get to populations of Slender Sedge.

Meet at the Forestry England Wootton Bridge car park, SZ250997. By the time of the meeting car parking charges are expected to have been introduced in the New Forest, but it is not yet known how much they will be. The route is typical New Forest terrain, with rough ground, often wet, and with minimal shade and the potential for ticks. Please come prepared.

### Monday 29 June, 9.30am–4pm

#### Malshanger Estate – Arable plant survey

Leader: Tristan Norton ([vc11recorder@hantsplants.net](mailto:vc11recorder@hantsplants.net))

This is another opportunity to visit one of the premier areas for arable plant species in Hampshire (indeed the UK as a whole). Following on from a visit in July 2025, the purpose of this visit is to provide the estate with more data on arable plant species to assist with their ongoing management for biodiversity. We will concentrate on the central and western parts of the estate and will search for species including Annual Knawel (this is a very rare arable species in Hampshire) and Henbane.

It is tricky to estimate the ground we will cover, but we can expect to walk several kilometres over rough arable margin ground at a sedate pace in minimal shade.

### Friday 17 July, 5pm–8pm

#### Western Hayling Island coast – shingle, saltmarsh and coastal grassland plants

Leader: Tristan Norton ([vc11recorder@hantsplants.net](mailto:vc11recorder@hantsplants.net))

An evening meeting to explore the rich coastal habitats of Hayling Island's western coast. Commencing at the Hayling Oyster Beds nature reserve, we will take a return slow walk north and south along the excellent Hayling Billy Trail. Along the way we will investigate the herb rich grassland either side of the Billy Trail as well as looking at the vegetated shingle, annual vegetation and saltmarsh habitats of the Oyster Beds and various points along the route.

Species to find here include Meadow Barley, Milk Thistle and Grass-leaved Orache, as well as chalk grassland species on Victorian chalk spoil. We will pass by the main saline lagoon where we should see, hear and smell the spectacle of what is probably the largest seabird colony in southern England (mostly Common Terns and Black-headed Gulls). Parts of the site underwent substantial disturbance in 2024/25 so there should be lots of sparsely vegetated ground and 'weedy' species.

There are some fine stretches of vegetated shingle and saltmarsh to the west of the Billy Trail and lovely brackish pools and sedgy grassland to the east. Species to look out for here include Golden Samphire, Sea-lavenders, Divided Sedge, Parsley Water-dropwort and Pepper-saxifrage.

The terrain is generally flat and undemanding, but the route will entail occasional walking across areas of shingle. There is free parking at the Oyster Beds (SU71720295) and a refreshment van there. There are no public toilets along the route.

### **Friday 28 August, 5.30pm–8pm**

#### **Havant street flora**

**Leader: Tristan Norton** ([vc11recorder@hantsplants.net](mailto:vc11recorder@hantsplants.net))

An early evening visit to explore and record the urban flora of Havant. We will take a slow walk around various residential streets north of Havant town centre. Literally anything could be found, but we will hopefully see the very scarce (in Hampshire) Argentine Fleabane.

Meeting spot to be confirmed. Will be easy walking on paved streets. Paid parking available. Close to Havant train and bus stations.

### **Early September (date and time to be confirmed)**

#### **Gutner Point, Hayling Island – glassworts and other saltmarsh plants**

**Leader: Tristan Norton** ([vc11recorder@hantsplants.net](mailto:vc11recorder@hantsplants.net))

A visit to Hampshire County Council's Gutner Point National Nature Reserve and a chance to see all the UK's Glasswort species in one place. Other species to look out for include Sea-heath and Sea-lavenders.

The terrain is saltmarsh – uneven and with occasional ditches, pools and sticky mud. Appropriate footwear essential.

## Reports of Recent Events

### Flora Group/BSBI Exhibition Meeting and AGM – Saturday 6 December 2025

A report by John Norton

Our annual December get-together was once again held at the Trust's Testwood Lakes Education Centre, but despite better weather than in some recent years the attendance was down slightly with only about 40 members present. Thanks are due, as ever, to Clare Rand and Pat Mundell who maintained tea and coffee supplies throughout the day and to everyone who took the trouble to prepare food or buy supplies for lunchtime.

Tony Mundell and Eric Clement brought along a selection of their herbarium specimens, which included a mystery cudweed that Tony and Cathy Wilson had found in an arable field margin at Foley Manor, Liphook, probably sown with a seed mixture (see images below). Martin Rand again brought a selection of newer field guides and a selection of hand lenses for sale. Tristan Norton brought in a copy of the impressive *Orchids of Europe, North Africa and the Middle East* by Dutch author Carolus Kreutz (currently £42.50 from Summerfield Books). John Norton brought some unwanted books to sell, including some from the late David Allen, and £20 was raised for Flora Group funds. Tristan again demonstrated his Tomlov digital microscope, which looked to be a very useful addition to the botanist's workbench.

The main part of the day was spent holding the AGM. Martin took the opportunity to officially announce he was leaving the Flora Group Committee and we hope all Flora Group members will join with us in thanking Martin for his outstanding contribution to the running of the committee and to furthering the recording and teaching of botany in Hampshire over many years. On top of his commitments as a BSBI Vice-County Recorder (including validating thousands of plant records each year and compiling the summary for *Flora News*) he has organised and led multiple Flora Group meetings every year and has run many workshops on difficult plant groups, including grasses, sedges, ferns and even 'leathery-leaved' plants. He also of course maintains the Hants Plants website which provides a focus for all things botanical in the county. He still hopes to lead some meetings and help out with recording matters, but one of the reasons that Martin is standing down from the committee is that he wanted to put most of his 'indoor' efforts into the development of the Flora of Hampshire Supplement (see note on p. 19). He still hopes to lead a few meetings for us in 2026 and will continue to help administer the Flora Group's Facebook page.

#### Could this be *Filago pyramidata*?

There are many records for the rare *Filago pyramidata* in both VC11 & VC12, all but one of them for 1850 – 2000. In 2025 Tristan Norton found plants of it in VC12 on MOD land near Aldershot, that were confirmed by Tim Rich.

When with Cathy Wilson on 23 May 2025, I saw a few *Filago* plants in a former arable field at Foley Manor, Liphook, which had been sown with many plants including the alien form of Bird's-foot-trefoil, *Lotus corniculatus* var. *sativus*, and Crimson Clover *Trifolium incarnatum* subsp. *incarnatum*. In May the *Filago* plants were very immature, only 1-2 inches tall and not yet flowering. I went to pick a sample, and it came up with a root. So I put it in a pot at home and grew it on until it started to produce seed. This specimen is the result.

I have attached a key from 'The Plant Crib'. After pressing it is difficult to decide how many capitula are in each flower head, or how many hermaphrodite flowers are in each capitulum.

Can anyone identify it?

The jizz is not typical of *F. germanicum* (formerly called *F. vulgaris*) because the flower heads on the specimen are overtopped by subtending leaves, often plus even more stems and leaves.

I probably need a fresh flowering specimen for a definite ID, so I will try to grow some of the seed on.



Tony Mundell's presentation on a mystery cudweed. John Norton

At the AGM Martin's presentation entitled 'The future for Hampshire Flora Group' considered all the advantages and disadvantages of either continuing under the Hampshire & Isle of Wight Wildlife Trust mantle or splitting off as a stand-alone society. It was explained that the Flora Group is in an unusual position as possibly the only active group that remains tightly affiliated to the Trust (formerly there was also a Hampshire Amphibian and Reptile Group and a Hampshire Mammal Group). As such we are subject in all our work to '... any instructions and directions from and under the control of the Trust's Council of management ...'. Our objectives are laid down, to: promote the conservation of flora in Hampshire and the Isle of Wight; establish and monitor the status of flora in Hampshire and the Isle of Wight; foster an interest in the conservation of flora in Hampshire and to develop the skills of those interested in flora. It was noted that all members of the Flora Group must be members of the Trust, though the Trust recently confirmed that this is currently not the case and also that many members live outside Hampshire. All Committee members must be Trust members and must include a Chair, an Hon. Secretary and an Hon. Treasurer (maximum ten members). Any other Committee members and any other Flora Group members who play an active role must register as Trust volunteers. The Trust can appoint a non-voting representative to the Flora Group Committee. The Flora Group's obligations include holding an AGM every year and appointing an Hon. Treasurer to keep and submit accounting records (this was previously carried out by Clive Chatters).

Benefits of belonging to the Trust include free insurance cover, free use of meetings venues and assistance with distributing copies of *Flora News*, including covering expenses for mailing out printed copies. Amongst the disadvantages of leaving the Trust are the fact that we would have to pay for venues to hold indoor meetings and workshops ourselves and hence may need to charge a membership fee to pay for these and other costs, including newsletter distribution and internet presence. We would also lose the increased credibility that goes with being associated with the Trust, which is helpful when negotiating access with landowners.

Although we didn't hold an official vote at the meeting, most of the 40 members present were strongly in favour of leaving the Trust, but at the end of the meeting it was decided to keep our options open and continue discussions with the Trust. In the event we have decided that splitting from the Trust is the only viable option (see Editorial, p.2). If you are interested in joining the Hampshire Flora Group Committee and taking on one of the vacant administrative roles, please read Martin's article in the last issue and contact Nick Aston or any of the committee members.

## **BSBI New Year Plant Hunt, Chandler's Ford – Friday 2nd January 2026**

### **A report by Martin Rand**

**F**ive Flora Group / BSBI members took part in this three-hour session which almost exactly repeated the itinerary taken in the preceding couple of years. The aim of these sessions is to record all plants (native and non-native, and not deliberately planted) outside gardens which are actually showing anthers or styles and so, in theory at least, capable of reproduction. The 'official' proceedings started from outside Waitrose at Fryern Hill and looped through almost entirely suburban surroundings, but the leader took the opportunity to record weeds in his recently turned-over front garden on the way to meet the others, and was surprised to find one flowering plant of Grey Field-Speedwell *Veronica polita* – a first for this hunt itinerary and a first for the garden, too.

The more urbanised surroundings at the centre of Fryern Hill yielded several of the aliens we have now come to expect, including Water Bent *Polypogon viridis* and Jersey Cudweed *Laphangium luteoalbum*, but others such as Annual Beard-grass *Polypogon monspeliensis* and Greater Celandine *Chelidonium majus* had decided to call it a day in the face of the cold snap. Moving on across a small area of grassy open space where we were really surprised to find a few spikes of Grey Sedge *Carex divulsa* with floral parts showing, we meandered through the 'Roman' housing estate where we had hopes of finding Balkan Spurge *Euphorbia oblongata*, Musk Stork's-bill *Erodium moschatum* and perhaps even Spotted Medick *Medicago arabica*. The first came through



for us as usual, along with naturalised Japanese Honeysuckle *Lonicera japonica*, but while there was plenty of luxuriant foliage on the latter two, not a flower was in evidence.

Heading back to the Fryern recreation ground we looked for Red Campion *Silene dioica* in a sheltered spot where it can often be found flowering during the winter, but it had been so butchered by mowing this year it was barely possible to find leaves. However, an abandoned sowing of fake 'wildflower meadow' species made a few years ago, and now abandoned to its fate, proved productive of regenerating survivors and incomers. Along with the anticipated Corn Marigold *Glebionis segetum* and Pot Marigold *Calendula officinalis*, we spotted a rather sad-looking Mayweed look-alike that we determined as Annual Marguerite *Mauranthemum paludosum* – not part of the original sowing but perhaps deliberately introduced since, or else a previously unnoticed hitch-hiker in the seed bank.

The next few streets proved to be quite unproductive and it was unusual to find a bank of naturalised *Mahonia* × *wagneri* showing no flowers at all, but a small self-seeded *Mahonia* × *media* was flowering well. Up near the railway, where both species of *Galinsoga* are to be found, Gallant Soldier *G. parviflora* was flowering abundantly though looking very sorry for itself but there was no sign of Shaggy Soldier *G. quadriradiata*, and the Round-leaved Crane's-bill *Geranium rotundifolium* that did well for us last year was there but not flowering.

A short excursion along the banks of the Monk's Brook gave us a few more natives, including Dog's Mercury *Mercurialis perennis* and one very early flowering Alder tree *Alnus glutinosa* which required binoculars to be sure the anthers were really out. After this we were on the home straight but continued to add a few to the list including Pellitory-of-the-wall *Parietaria judaica*. The final total was 49 species in flower; a respectable number if rather down on the previous year.



Left: Balkan Spurge *Euphorbia oblongata*, well naturalised along a suburban greenway; right: Oregon-grape *Mahonia* × *media*: one of several small plants along roads and greenways in the area that appear to have established themselves from nearby plantings. *Martin Rand*



## Notes and Features

### The new GB vascular plant red list is out

An article by Neil Sanderson

As some of you will have noticed there is a new vascular plant British Red List published by the BSBI, using the data generated by Atlas 2020. This can be downloaded from the BSBI website: [bsbi.org/learn/publications/other-books/a-new-vascular-plant-red-list-for-great-britain](https://bsbi.org/learn/publications/other-books/a-new-vascular-plant-red-list-for-great-britain). This is an update to the Cheffings & Farrell GB Red List of 2005, the last revision of which was published in *BSBI News* in 2021, but the separate England Red List published in 2014 has not been revised in line (see Martin Rand's note below), so there will be inconsistencies between that and this new GB Red List.

There is an excellent explanation of the complex process of applying the IUCN criteria in the introduction. As someone currently involved in doing a new Red List for lichens, it is interesting to see the process being applied to much better, but still imperfect data, than the lichen database. This version of the vascular plant Red List benefits from the use for some impressive statistical software (see the Atlas 2020 website: [plantatlas2020.org/atlas](https://plantatlas2020.org/atlas) under the trends tab), but as with all probability statistics this can still throw up nonsense results. Expert interpretation is still required, as can be seen from some of the comments on the individual species where the results of the statistics have been rejected. The IUCN rules are complex and when one is using them do seem to be designed more for tigers than plants or fungi, but they provide a standard basis for assessing threat. With care and expert interpretation, they are usable across a wide range of organisms and data quality.

The Criteria used are (very briefly):

**A. Population size reduction.** Population reduction (measured over the longer of 10 years or 3 generations). This brings in the fraught question of what is a plant generation? This Red List tackles this for the first time in a British vascular plant Red List, assigning species to either a long-term trend (a comparison of the first atlas time period 1930–1969 with the third atlas time period 2000–2019) or short trend (comparison of the second atlas 1987–1999 and third atlas time periods 2000–2019). These declines apply to any species, however frequent it is, so quite widespread species can be assessed as Red List species if their decline is 30% or more, over the assigned assessment period. Hampshire examples are Silver Hair-grass *Aira caryophyllea*, Early Hair-grass *Aira praecox*, Wild Gladiolus *Gladiolus illyricus* (*G. gallaecicus*) and Devil's-bit Scabious *Succisa pratensis*; all Vulnerable but all very different in terms of rarity.

**B. Geographic range.** In the form of either extent of occurrence (the wider spread of records) and/or area of occupancy (measured as defined areas around actual records). To be assessed in this the species needs to also be declining or threatened (but declines of less than 30% count) and quite restricted in its numbers of locations. A measure of rarity and threat. Hampshire examples are Ground-pine *Ajuga chamaepitys*, Brown Galingale *Cyperus fuscus*, Slender Cottongrass *Eriophorum gracile* and Red-tipped Cudweed *Filago lutescens*.

**C. Small population size and decline.** Similar to Criterion B but using numbers of mature individuals. The species also needs to be threatened, but numbers of locations are not a factor, and can be assessed as a Red List species if there are <10,000 individuals. Hampshire examples are Narrow-leaved Helleborine *Cephalanthera longifolia* and Red Helleborine *Cephalanthera rubra*.



Early Hair-grass *Aira caryophyllea* – now Vulnerable in Great Britain. John Norton

**D. Very small or restricted population.** A useful final catch all, which can be used for very rare species, as the species does not need to be threatened and can be assessed as a Red List species if there are <1,000 individuals. Hampshire examples are Starfruit *Damasonium alisma* (now extinct in the county) and New Forest Bladderwort *Utricularia bremii*.

**E. Quantitative analysis.** This is for very well-known species, whose population trends can be meaningfully modelled. Never used for plants as far as I am aware.

The results include some interesting changes. Two examples are Meadow Thistle *Cirsium dissectum* and Pale Dog-violet *Viola lactea*. The former has never before been red listed but is now assessed as Endangered under Criterion A using its long term trend. This is well deserved promotion, its previous classification as Least Concern appeared anomalous for a clearly management-dependent and declining species, which mainly spreads clonally and appears to colonise very poorly and lacks much of a long term seed bank; a very vulnerable species. In contrast *Viola lactea*, which shares some habitats with *Cirsium dissectum*, was assessed as Vulnerable in 2005 on Criterion A, but was assessed using the short term trend as Least Concern in 2025. It is still declining over this period, at 13%, so Criterion B could have applied; it is certainly still threatened as habitat quality is still declining. It does not qualify, however, although it likely occurs in less than 500 tetrads, so passes one hurdle for Vulnerable. It is still too widespread (number of locations), unless one could prove the populations were heavily fragmented. It does seem to have a long term seed bank so is a bit less vulnerable than *Cirsium dissectum*, but in the longer view it seems as threatened by the same threats of habitat under management as *C. dissectum*. This seems an inevitable result of applying the rules correctly, but does illustrate the anomalies that can arise.

Overall, this is an impressive effort and only possible by all those that contributed records to the Atlas 2020 project.

## Updates to the Hampshire Notables list

### A note by Martin Rand

**A**s Neil Sanderson's article in this issue reports, a new Great Britain Red List for plants is now published, and this provided the impetus to revise and reissue the Hampshire Notables List. The Notables List determines what is included in the Hampshire Rare Plant Register (also due an update!) and informs the decisions of local planning authorities in designating sites of conservation interest within the county and informing planning recommendations. I have now reviewed and brought up to date all criteria and supporting information, not just the changes to national threat status, and by the time you read this I anticipate that it will have passed its review stage and be available on the Hants Plants website ([hantsplants.uk](http://hantsplants.uk)). It will bring the List to Issue 23; by no means all of these issues were published, and many of them were working drafts during the development of the Rare Plant Register in the early days of the millennium.

The changes in status nationally do not make for cheerful reading. Only one Hampshire species (Bithynian Vetch *Vicia bithynica*) has been removed from the new national list because it is no longer considered Threatened. 30 Hampshire species have been added to the list because they now have a Threatened status nationally, and a further 28 are now considered Near Threatened. Many already on the Notables List for other reasons now have a national Threatened or Near Threatened status, raising their importance in the county. The full change list detailing both these and local changes in status should also by now be published on Hants Plants alongside the Notables List. It will be found under 'Projects / Hampshire Rare Plant Register'.

One consideration with the changes to the GB Red List is that it will no longer be in step with the separately published England Red List, and one must expect some but not all the changes to be reflected in a revised England list. Probably some more species will be added to the Threatened category from the England side once that revision happens. As there is no promised date for a new England Red List, it seemed best to go ahead now and not wait to update the Notables. In any case, our practice in Hampshire is to take whichever is the more severe of the two national threat statuses as a reason for including the species.

## **Churchyard botany projects**

**An article by Margaret Wonham**

### **Introduction**

**C**hurchyards are open-access spaces which have been protected for many years, so depending on site management, churchyards and graveyards can be very botanically rewarding.

Who is responsible for churchyards? The simple answer is the church authorities, sometimes assisted by local authorities and the Commonwealth War Graves Commission. The legal ownership of a churchyard is usually vested in the incumbent, but the responsibility for maintaining the churchyard in good condition and maintaining fences and walls rests with the parochial church council (PCC).

Churchyards have protective walls and fences which can moderate strong winds, and limit damage by grazing animals or dogs (which usually have to be kept on leads). The area surrounding a church is subject to the jurisdiction of the Bishop, exercised by the Diocesan Chancellor in the Consistory Court so all but very minor alterations require a faculty from the court. For example, the felling, lopping and topping of existing trees and the planting of new trees requires a faculty. New layouts and paths may require a faculty. Whoever maintains a churchyard, it has to be maintained in a good and decent state.

Conservation and environmental issues are increasingly important as the churchyard is often one of the few areas which has not been affected by chemical fertilisers and pesticides, so the environmental development of a locality can be traced. Sometimes the whole or part of a churchyard may be notified as a Site of Special Scientific Interest; this prohibits any operation within the churchyard which is likely to cause damage.

### **Surveying churchyards**

#### **Advantages of surveying churchyards**

- Obvious, clearly defined area for survey, small enough to complete a survey in one day or even half a day.
- Paths divide the area up for convenient surveying.
- Often free parking nearby.
- Attractive locations.
- Sometimes the church is open for shelter if needed.
- Free public access without the need for getting special permission.
- Often have interest other than botanical (war graves, special commemorations, architectural and historical) which can make an interesting visit for accompanying family members or friends who want a pleasant visit while the botanist is busy surveying.
- Often near to pleasant pubs for refreshments.
- Sites are easy to locate due to tall towers and spires and are easy to find on maps.
- Results are of interest to the church's incumbents, church wardens and parishioners – encouraging interest in botany to a significant number of people. People will only look after plants if they know a bit about them.

#### **Understanding more about what you see and find**

As well as recording and sharing the data that is collected, it is interesting to reflect in more depth and perhaps plan to develop your work. For instance, you may decide to look at other local churchyards and burial grounds and compare them, looking for what is the same and what is different.

#### **Making a start**

Help and advice is available from Martin Rand and more experienced members of the Hampshire Flora group who have extensive local knowledge. A project journal is a useful tool in planning and successfully completing your survey.



As with any scientific study, it is important to ask:

- What are you planning to study?
- What is already known?
- How, when and what are you going to observe and record?
- How do you plan to validate and verify your records? (The online BSBI Plant Atlas 2020 is a good start.)
- What species of plants are present in spring, early summer, late summer/autumn?
- What is the same now and what is different (in respect of the plants recorded)?
- Can the differences between churchyards and differences within each churchyard be explained?
- How are your results going to be shared?
- What further questions arise as a result of your work?

## My project

My own present project is based on churchyards of the Meon valley. I started in the south with just a couple of churchyards and then, as further questions occurred to me, I continued northwards along the Meon valley. I now have data relating to the following churchyards: Titchfield, Crofton Old Church, Soberton, East Meon, Exton, Droxford, Wickham. It is ongoing and very satisfying to find out more about the botany in this area as well as having the well-being benefits that come from being out in nature. Please contact me if you would like further information: [mwonham7@gmail.com](mailto:mwonham7@gmail.com).



Exton Churchyard (left) had just this small patch left unmown (by special request) – the rest was basically a very short sward with few flowers. The total number of species recorded was in the region of 50. This patch had Sowbread *Cyclamen hederifolium* and Autumn Hawkbit *Scorzoneroides autumnalis*. Crofton Old Church (right) is managed very differently. Much more 'left to nature' round the edges and the sward is left much longer. The total number of species recorded was in the region of 150. This grave had some Winter Aconite *Eranthis hyemalis* and Snowdrop *Galanthus nivalis*. Margaret Wonham

## Opposite-leaved Pondweed *Groenlandia densa* rediscovered on the River Ems – a glimmer of hope for a disappearing plant?

An article by Tristan Norton

When one thinks of the relentless assault on the natural environment by centuries of industrial development there can be no grimmer example than the case of our waterways. Pollution, abstraction, physical modification, recreational pressure and invasive species have taken a heavy toll on our rivers and streams, so much so that the majority of rivers in Hampshire are classified as being in poor ecological condition; one, the River Alver, is officially bad. There are still some areas where one can see aquatic and marginal plants and other wildlife flourishing, but the overall picture is not encouraging.

Despite this depressing reality, there are occasional reasons for optimism. This article explores one such example: the fortuitous ‘rediscovery’ of Opposite-leaved Pondweed *Groenlandia densa* near Emsworth, a plant not recorded in the Ems catchment since 1887. This is a plant whose populations have crashed across Hampshire and elsewhere in recent decades, so every site is now of significance.

On 27 November 2025 I attended – in a work capacity – a site visit to the lower reaches of the River Ems north-east of Emsworth. The purpose of the visit was to discuss possible restoration plans for the Ems and associated floodplain habitats, centred on Brook Meadow, a surviving fragment of relatively intact floodplain grassland and woodland. These plans are being led by the Western Sussex Rivers Trust (WSRT), part of the UK-wide Rivers Trust, a non-governmental organisation aiming to protect and enhance the UK’s rivers through collaboration between river and wetland experts, landowners and community groups. Further information on the Ems, its history and status can be found at <https://wsrt.org.uk/our-rivers/the-river-ems>.

In common with most chalk streams in Hampshire and neighbouring West Sussex, the Ems is in poor ecological and chemical condition. Parts of the river near Westbourne have been fully dry in mid-summer for several years, and there are few stretches that are without physical modifications such as sluices and weirs that impede fish passage and remove natural bed materials and plants. Another source of impact is groundwater abstraction for public water supply. Whilst some stretches of chalk streams are naturally ephemeral and dry in summer, decades of abstraction mean that dry periods become more frequent and persist for longer, with obvious knock-on effects for aquatic ecology. The point at which the Ems becomes permanently wet is moving south as the headwaters dry out. The Ems has also undergone physical modification to its course (Figure 1): it was substantially diverted in the 19<sup>th</sup> century during the construction of a railway, and the construction of the A27 in the late 1980s added further impacts, not least the direct drainage of highway surface water into the river at Brook Meadow.

Having walked around the lovely Brook Meadow and explored the various in-channel and riparian modifications on the river and its various carrier streams, it was notable that there were very few stretches with any aquatic vegetation. Indeed, the only sizeable patch of aquatic macrophytes was a few metres of Stream Water-crowfoot *Ranunculus penicillatus* seen within a narrow channel within a private garden near Lumley Mill – the channel bed here was clean gravel, unshaded, and the flow was clearly sufficient to allow chalk stream vegetation to persist. I chatted with the WSRT ecologist and casually mentioned that it would be lovely to imagine plants such as *Groenlandia densa* once again flourishing in a rejuvenated Ems.

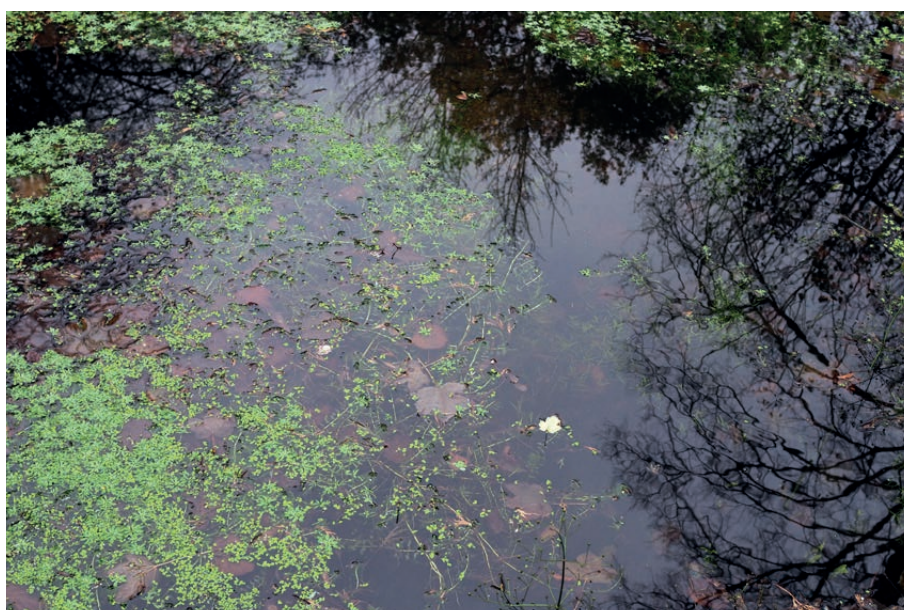
This particular garden was extensive, and in one corner there was a large pond, connected to the main river channel and sitting over a series of springs. Someone had clearly dug the pond to create an attractive water feature in the garden: chairs were placed there, alongside a couple of wooden decks and several planted tree ferns – all in all, a pleasant spot to sit on a warm day, glass in hand.

I took an opportunity to walk around the pond and see what was growing in the water. I noted plentiful Common Water-plantain *Alisma plantago-aquatica* as well as Water-starwort *Callitriche* species and Duckweeds *Lemna*. Then, to my great delight, I saw the instantly recognisable, green centipede shape of *Groenlandia* lurking just below the water’s surface – I was so excited that I let out a cry and called everyone over to look. On close inspection, *Groenlandia* was frequent throughout the pond, and I estimated that it covered around a third of the pond area, or c.50m<sup>2</sup> (Figure 2).





**Figure 1. River Ems at Brook Meadow, Emsworth, November 2025. The river channel here was diverted and culverted in the 19<sup>th</sup> century during the construction of the railway. The channel is artificial, constrained, and devoid of any meaningful aquatic flora. Unfiltered highway runoff from the A27 enters the river not far from this location. Water levels are unseasonably low.** *Tristan Norton*



**Figure 2. Opposite-leaved Pondweed *Groenlandia densa* in a garden pond near Emsworth. The pond is connected to the River Ems by a small feeder channel and sits above springs.** *Tristan Norton*

This constitutes the first record of *Groenlandia* for the Ems catchment since at least 1887, the year of Queen Victoria's Golden Jubilee. It seems inconceivable that the owners would have purchased such an obscure plant for their pond, so this is presumably a surviving fully natural population.

2025 has been a year in which I've become slightly obsessed by *Groenlandia densa*. I saw it for the first time in July at the well known outfall to Bedhampton Springs on the Hermitage Stream to the south of Havant (SU705062). The outflow channel from this Portsmouth Water site (Figure 3) is a concrete trench some 10m long, fed by pure spring water, and filled with Stream Water-crowfoot, Blue Water-speedwell *Veronica anagallis-*



*aquatica* and a sizeable patch of *Groenlandia*, first noted here in 1956 and recorded regularly ever since. This is the only known site in south-east Hampshire where *Groenlandia* has persisted.



**Figure 3. Outfall at Bedhampton Springs, Havant showing luxuriant chalk stream vegetation (left) and Opposite-leaved Pondweed growing with Blue Water-speedwell *Veronica anagallis-aquatica* (right). Tristan Norton**

It is perhaps no coincidence that the only two known sites for *Groenlandia* left in south-east Hampshire – at Bedhampton, and now Emsworth – are both within habitats connected to, but not within, main river channels and are closely associated with springs. It has been suggested that *Groenlandia* is retreating upstream towards springheads as main rivers become unsuitable due to the pressures discussed above (Richard Lansdown, pers. comm.) and the current situation in south-east Hampshire would attest to this. The Hermitage Stream adjacent to the Bedhampton site is in an awful condition, highly modified (Figure 4) and with essentially no aquatic vegetation present. The water gives off a foul smell, and it seems a stretch to think that *Groenlandia* – a plant that can tolerate moderate levels of eutrophication – could establish and persist here at present. I had a



**Figure 4. The Hermitage Stream just upstream of Bedhampton Springs. A series of concrete step weirs designed to control flow have resulted in a constrained channel with no obvious natural bed material, copious filamentous algae and no aquatic macrophytes. A textbook example of how badly we have treated our chalk rivers.**



chance to look at the nearby mill pond at Bedhampton Mill (SU703061) in summer 2025 (Figure 5) but could not see any *Groenlandia* among the masses of New Zealand Pigmyweed *Crassula helmsii*. The mill pond is extensive and within a private property, so it may well be that a closer investigation would turn up a hitherto unknown *Groenlandia* population. I'd like to take a kayak out there.



**Figure 5. Bedhampton Mill Pond, July 2025. Might *Groenlandia* be surviving in this extensive, and largely inaccessible, waterbody?** Tristan Norton

Besides over-abstraction, there may be other factors affecting the suitability of our rivers and streams for *Groenlandia*. In June 2025 I walked the Itchen Navigation at Winchester between Tun Bridge (SU483280) and Wharf Hill (SU485288) over a couple of evenings to see if any *Groenlandia* was present. Martin Rand had carried out a similar exercise in 2009 and found a good few patches on both sides of the river. A return visit in 2011 found almost none. I also found none in June 2025. I was struck by the turbidity of the water in the main river, especially at the margins where *Groenlandia* is perhaps most likely to grow. This turbidity appeared to result almost entirely from regular access to the water by dogs, with their claws eroding the banks and the scoured soils entering the water (Figure 6). I noted the same issue at another traditional *Groenlandia* site at Droxford. The site (SU609181) – on the Meon near St Mary & All Saints Church – was the first British location for *Groenlandia*, recorded by John Goodyer in 1621. The *Groenlandia* was last seen here in 2012 and was not seen in 2015 nor by me in 2025. There was obvious evidence of erosion caused by dogs along all the nearby riverbanks. What would Goodyer think if he could see the site now, I wonder? *Groenlandia* also seems to have disappeared from traditional sites on the Itchen at Bishopstoke (last seen 2009) and the Meon at Titchfield (also last seen 2009).

Given the poor condition of most of our chalk rivers and streams, and especially the increasing frequency of drying events and the evident increase in turbidity from recreational pressure, it may be that plants such as *Groenlandia* are finding refuge in garden ponds or other undisturbed, clear, and permanently wet features not within the main river channels. It is simply impossible to know how many of these 'off-line' features might be out there hiding in private gardens or other out-of-bounds locations.



**Figure 6. Erosion caused by dogs on the banks of the Itchen Navigation at Tun Bridge, Winchester, June 2025. Sediment enters the water, creating turbidity that will discourage aquatic plant growth as well as affect fish spawning habitat.** Tristan Norton

It seems entirely plausible – perhaps probable – that *Groenlandia* populations persist in tucked-away ponds, lakes, ditches, and small carrier streams on private land. As our main rivers and streams have become hostile territory, plants may have taken refuge in the relatively constant conditions of these ‘artificial’ wetlands, especially at spring heads where there is regular, good quality water and fewer of the pressures affecting main channels.

Might we envisage a situation where *Groenlandia* can be encouraged back to its chalk stream habitats, or at least able to persist in off-line situations until our waterways approach better ecological status? Since August 2025 I have had *Groenlandia* growing in a small kitchen sink ‘pond’ in my garden, having ‘rescued’ a small, detached fragment of a plant from the Bedhampton site. I anchored this fragment in a small lump of aquarist’s soil and cobbles, and it has since grown incredibly rapidly into a sizeable plant with numerous long, leafy stems which rooted copiously and flowered throughout August and September (Figure 7).

From my limited experience with propagating *Groenlandia* it seems as though this is a plant that can be grown readily in *ex situ* conditions, boding well for the possibility of establishing ‘ark populations’ of Hampshire material ready for reintroduction, if that is desirable. A note of caution is provided by Denyer Ecology (2019) who summarise the results of various translocation projects in the Republic of Ireland and France. Of the seven projects detailed, none were successful in the long term, primarily due to problems associated with anchoring plants in loose sediment as well as ongoing management to maintain open water habitat (I should add that putting some heavy stones over the base of plants seems like an obvious solution). Plants were very successfully grown in captivity, however. Wróbel et al. (2020) found that only nine of 33 reintroduction sites persisted in two study areas in Poland. Reasons cited for the failure of reintroductions were excessive nutrients and sediments entering river systems due to lack of buffering riverside vegetation, and modified channels restricting opportunities for diverse aquatic macrophyte cover. These are system-wide, societal problems facing waterways across the world.

While it seems highly unlikely that the many impact pathways affecting our freshwaters will be addressed anytime soon, there will hopefully come a day when our waterways are in recovery, and we can begin to hope that plants such as *Groenlandia* will make a comeback. In the meantime, perhaps a concerted effort to visit out-of-the-way waterbodies might yield results? I plan to try and approach local fish farms, fisheries, and former water mill sites in 2026 to see if access will be granted to look for *Groenlandia*. It’s surely worth a try.

## References

Denyer Ecology (2019). Section 21 Application *Groenlandia densa* Methods Statement. Denyer Ecology, Dublin.  
Wróbel, M., Furdyna, A. & Miller, T. 2020. Reintroduction of *Groenlandia densa* (L.) Fourr. – experiences and suggestions. *Biodiversity Research and Conservation* 60(1): 1–10. <https://doi.org/10.2478/biocr-2020-0010>



**Figure 7.** *Groenlandia densa* growing in a kitchen sink in my garden. A small fragment collected in August has grown into a multi-stemmed, flowering plant in a few months. Tristan Norton



## Book Reviews

**WILD ROSES OF GREAT BRITAIN AND IRELAND BY  
ROGER MASKEW & GARETH KNASS**  
Botanical Society of Britain and Ireland, BSBI Handbook  
No. 26; pp. 285, copious photographic illustrations, B5  
paperback, £25. ISBN 9780901158635

Reviewed by Tony Mundell

One of the two authors of this splendid new BSBI Handbook, Gareth Knass, contributed an announcement of its planned publication in *Flora News* 69 pp. 31–32. That announcement summarised the scope of the book, giving an overview of the contents, and an example of a typical page from the species accounts. It was clear that it would be a dramatic improvement when compared with the former *Roses of Great Britain and Ireland*, BSBI Handbook No. 7 by G.G. Graham and A.L. Primavesi that was published in 1993 (and reprinted with corrections in 2005).

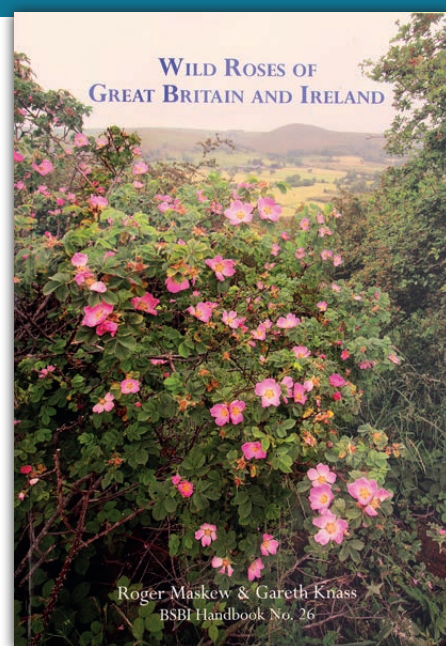
The earlier handbook relied on line drawings to illustrate the particular set of morphological characters that are used to identify wild roses, and also to accompany the individual accounts of the species, but the numerous hybrids then known were not illustrated. One of the main improvements in the new handbook is the plethora of high-quality photographic illustrations that are used, often with a few words of explanation beside each feature pointing out clearly what to look for.

I have personally had an interest in wild roses for quite a while, inspired by the earlier handbook. I see from the records that I had 36 rose specimens named by the Rev. Primavesi from 1997 to 1999. He was incredibly helpful in his responses, but I soon found how difficult wild roses can be to identify. There is no doubt that the new handbook will be of enormous help to anyone wanting to identify roses.

The book starts with an introduction outlining the main changes in knowledge of roses since the earlier handbook and is followed by sections describing the ecology and habitats of roses, again well-illustrated with photos. This is followed by a fascinating section on the relationship between roses and other taxonomic groups, including fungi, invertebrates, birds and mammals. I did not realise that mice sometimes fed on the achenes in rose hips, but the photos are very clear and convincing.

Sections on rose morphology, identification characters and terminology are copiously illustrated. For example, the all-important types of glands and the difference between uniserrate and multiserrate leaflet margins can easily be understood. It is pointed out how difficulties in identification arise because the species are readily able to hybridise with each other and introgression is also common. Hybrids are relatively frequent and are very variable in morphology, so it can be difficult for a beginner to even get a clear idea of what characterises the pure species. Moreover, most of the species have an unusual breeding system so that the female dominates by contributing the majority of the genetic material, four fifths in most cases. This means that the hybrid produced shares most of its characters with the female parent. A cross between the same pair of species, but with the other one now the female (the reciprocal hybrid), gives a totally different-looking plant.

Sections follow giving advice on how to recognise and record hybrids, on collecting and preserving herbarium specimens, and on the history of rose taxonomy, clearly listing the currently recognised species and their known hybrids. There is a key to the native species and some aliens plus three common hybrids, before we reach the main part of the book, where the species and hybrids are described in detail, many with superb photographic illustrations. The 15 native species, 20 aliens and the majority of the 82 hybrids that have been recorded in our area are described. Updated distribution maps and close-up photos of the species, and some of the hybrids are included. Understandably some hybrids have very rarely been recorded so they could not be illustrated, but descriptions are given with as much information as possible, often gleaned from herbarium



specimens. A very valuable feature of all the species or hybrid descriptions is that the most important diagnostic characters are shown in italics.

This handbook gives an excellent and comprehensive coverage of the current state of knowledge about wild roses. I am hopeful that it will lead to many more people taking up making records of them. As roses can only be identified positively when the hips are fully developed there is only a relatively short window for searching for them. Please buy this book and have a go at them.

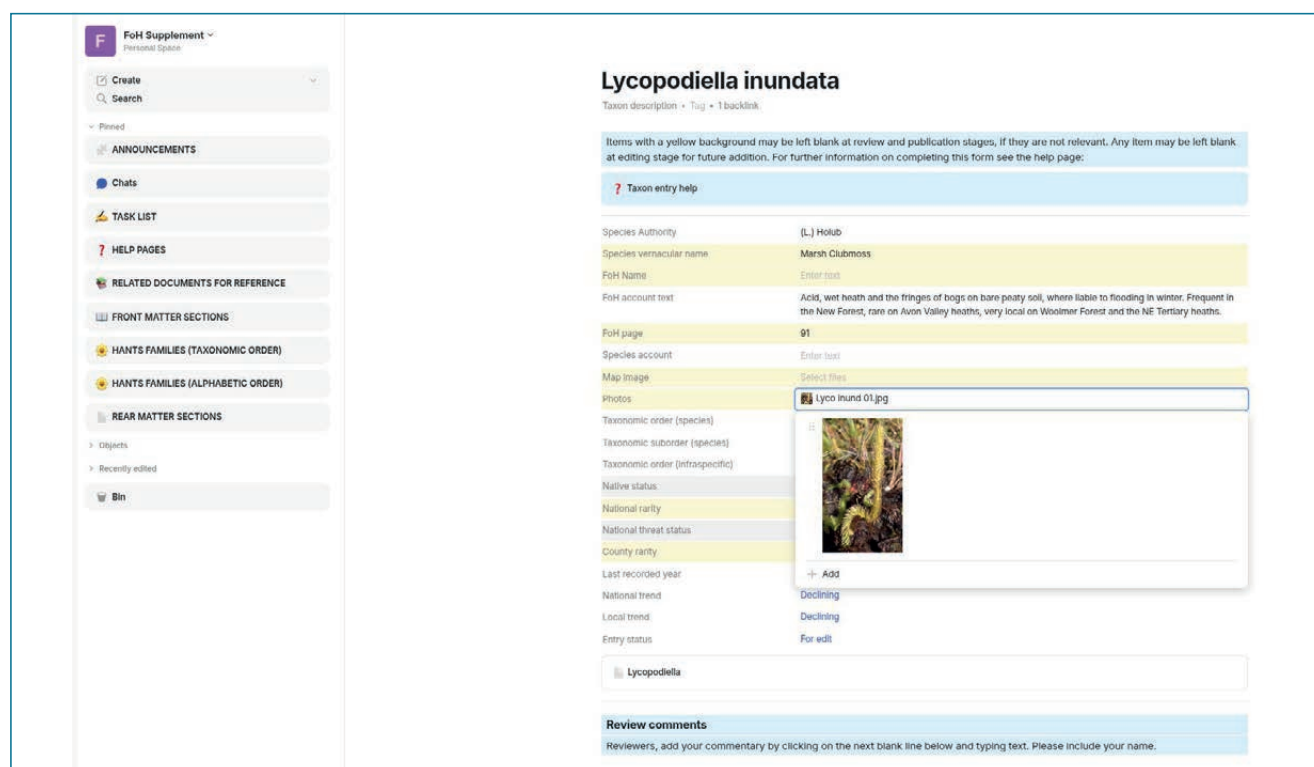
## Recording

### The Flora of Hampshire Supplement

#### A note by Martin Rand

**W**ork is progressing on the Supplement to the *Flora of Hampshire*. Currently we have a working system for collaborative assembling, editing and reviewing of the data (see example below), for which I would welcome volunteers. Some of the editing doesn't require detailed knowledge, as it entails completing the 'scaffolding' (i.e. family and genus data) on which the species accounts hang, and there is plenty of help and reference material in the system for that. You can take bits on in very small chunks and that will still be a valuable contribution. If anyone is interested, please let me know (email: [martin.rand@hantsplants.uk](mailto:martin.rand@hantsplants.uk)). I'm happy to run online sessions to introduce the system, for which I've already developed quite copious help. The reviewing role is quite straightforward. Currently one person has put their hand up for a bit of editing and one for reviewing. I will probably make appeals for photos from time to time, too.

I envisage having the facilities to collate the data automatically in forms for publication during the year. My first output target will be PDF format, allowing issue of the text in sections in e-book format or for printing. After that I will look at publication as website content. On this basis, I expect to be able to issue sections for vascular cryptogams and gymnosperms (at least) in PDF format this year.



The screenshot shows a web application interface for the 'FoH Supplement'. On the left is a sidebar with navigation links: 'Create', 'Search', 'Pinned', 'ANNOUNCEMENTS', 'Chats', 'TASK LIST', 'HELP PAGES', 'RELATED DOCUMENTS FOR REFERENCE', 'FRONT MATTER SECTIONS', 'HANTS FAMILIES (TAXONOMIC ORDER)', 'HANTS FAMILIES (ALPHABETIC ORDER)', 'REAR MATTER SECTIONS', 'Objects', 'Recently edited', and 'Bin'. The main content area displays the entry for 'Lycopodiella inundata'. At the top, it says 'Taxon description • Tax • 1 backlink'. Below this is a blue box with a warning: 'Items with a yellow background may be left blank at review and publication stages, if they are not relevant. Any item may be left blank at editing stage for future addition. For further information on completing this form see the help page: Taxon entry help'. The entry form includes fields for 'Species Authority' (L. J. Holub), 'Species vernacular name' (Marsh Clubmoss), 'FoH Name' (Enter text), 'FoH account text' (Acid, wet heath and the fringes of bogs on bare peaty soil, where liable to flooding in winter. Frequent in the New Forest, rare on Avon Valley heaths, very local on Woolmer Forest and the NE Tertiary heaths.), 'FoH page' (91), 'Species account' (Enter text), 'Map image' (Select files), 'Photos' (Lycopodiella inundata 01.jpg), 'Taxonomic order (species)' (Lycopodiella), 'Taxonomic suborder (species)', 'Taxonomic order (infraspecific)', 'Native status', 'National rarity', 'National threat status', 'Country rarity', 'Last recorded year', 'National trend' (Declining), 'Local trend' (Declining), and 'Entry status' (For edit). There is a 'Review comments' section at the bottom with a text area and a 'Review' button.

## VC11 Notes and records

Compiled by Martin Rand and Tristan Norton

### The year 2025 in review

I must say that I (TN) struggle with January. It drags on forever, the jollity of the festive period has ended, it's back to work, and there is very little to entertain the field botanist (New Year Plant Hunt aside). But it is a time during which to reflect on the year gone by, look forward to warmer days, and to catch up on all the necessary admin jobs that were put off. On the latter point, I am again grateful to Martin for compiling this batch of VC11 records – even with IT wizardry it's a big job.

For me personally, 2025 didn't seem at the time like a productive year of field recording and I feel like I didn't get out as much as I'd hoped. Looking back now, it was actually a very good year, and I got to see a number of new species, visit some exceptional locations, alone and with others, and made some interesting discoveries to boot. Judging by the number and variety of records received in 2025 – the most notable of which are provided below – it was also a productive year for many others. I offer my sincere thanks to all those who have scoured streets, fields, verges, downs, rivers, beaches, woods and wetlands – your records are most welcome. Please keep it up!

A total of 15,688 new records were verified and added to the BSBI Distribution Database (DDb) database for 2025. This is a bit lower than in previous years, but there have been some issues with getting large datasets added to the DDb, with thousands of records from Living Record and HBIC still outstanding. This will hopefully be rectified very soon.

There has been a notable and very welcome increase in records coming in via the BSBI Recording app. This is easily the most straightforward route – for me as VCR at least – of getting data quickly and efficiently. I can verify records directly in the DDb and, once verified, they appear on the database within a few hours or so. With my ever-present mobile phone, I find myself using the app all the time and it is extremely convenient. If you haven't yet made the jump, please do give it a go.

### Records

Because of space considerations, the report has been limited this time largely to species and hybrids, excluding subspecies and varieties; and to hectad (10km square) new finds and refinds.

The codings at the front of each plant are:

**\*** = Hampshire notable (**\*\*** = British or English Red List). We list these whenever we have a record for a hectad that is either new, or the first for a long time (usually taken as 20–25 years, but for species 'on the brink' it can be shorter).

**NA** = Native or Archaeophyte. We list these if they are new vice-county records, new to a hectad or the first for a long time.

**IN** = Invasive, or Potentially Invasive, Non-native. We use the IUCN's three-pronged definition of 'Invasive', so that a plant like *Artemisia ambrosiifolia* (Ragweed), which hasn't actually invaded anywhere in Hampshire yet but will pose a health hazard if it does, are included. When you are recording we would like as precise a grid reference and as many supporting details as possible.

**NN** = other Neophyte Non-native. Defining Neophyte (arrived after 1500) or Archaeophyte (arrived by 1500) in a local context is beset with difficulty, but we use this category if the plant in the given location is outside its generally agreed native range and can reasonably be inferred to have got there recently by human agency whether intentional or not. That includes plants that are native elsewhere in Britain, or even nearby in other habitats. We list these if they are new vice-county records, new to a hectad or the first for a long time. For some, we simply list new hectads. We exclude patently planted trees and shrubs occurring in gardens, municipal parks and cemeteries unless they are also self-establishing or very likely to do so. However, we keep records for them on the database, so such records are welcome provided you state that they are 'Planted' if the only individuals clearly are planted, or 'Introduced' or 'Established' if they are spreading naturally from original plantings.

Abbreviations for recorders and determiners are:

AMC=Andrew Cross, AFoy=Alex Foy, AHP=Andrew Powling, ALu=Adam Lucas, ASt=Anna Stewart, CO=Chloe Osborne, DHub=Dave Hubble, DPe=Dave Pearson, DL=David Leadbetter, DRA=Debbie Allan, DTr=Dennis Trunecka, EJC=Eric Clement, EP=Ewan Pierce, FC=Frankie Collings, GK=Geoffrey Kitchener, GMac=Gavin Maclean, HFG=Hampshire Flora Group (field meeting), HGi=Hannah Gibbons, JAN=John Norton, JDew=Jenna Dewhurst, JDy=Jonathan Dye, JF=Jeanette



Fryer, JPol=John Poland, JRi=Judith Rich, KN=Kat Newbert, MGI=Mike Glavin, MPa=Mary Parker, MR=Martin Rand, MWR=Mike Rowe, MWi=Mike Wilcox, MaW=Margaret Wonham, NB=Nick Blewden, NWA=Nick Aston, OD=Ollie Davis, PHu=Paul Hughes, PW=Pat Woodruffe, RCR=Clare Rand, RHWa=Robert H Wardell, RMab=Richard Mabbutt, SDa=Sarah Davis, SFi=Sue Fitzpatrick, ST=Sam Thomas, TCGR=Tim Rich, TCox=Toby Cox, TN=Tristan Norton.

**NN *Acer saccharinum* (Silver Maple):** Teg Down area, Winchester, SU46609 30053; 17 Aug 2025; MR. **1st for SU43.**

**NA *Agrostis capillaris* × *stolonifera* = *A. × murbeckii*** Rowlands Castle South East, SU7309; 12 Nov 2025; AHP, EJC. **1st for SU70.**

**NN *Akebia quinata* (Five-leaf Akebia):** Teg Down area, Winchester, SU46640 30050; 17 Aug 2025; MR. **1st for SU43.**

**IN *Alchemilla mollis* (Garden Lady's-mantle):** Teg Down area, Winchester, SU46240 30177; 17 Aug 2025; MR. **1st for SU43.**

**\*NA *Alisma lanceolatum* (Narrow-leaved Water-plantain):** New Forest National Park, Southampton, England, GB, SU42349 04420; 12 Aug 2025; TCox. **1st for SU40.**

**IN *Allium paradoxum* (Few-flowered Garlic):** Noads Copse area, SU26760 32509, SU26804 32591, SU26502 32460; 17 Apr 2025; MR. **1st for SU23.**

**IN *Allium trifoliatum* (Hirsute Garlic):** Havant PO9, UK, SU72168 07064; 30 Apr 2025; RHWa. **1st for SU70.**

**NN *Amaranthus powellii* (Powell's Amaranth):** Chandler's Ford, South Millers Dale, SU428 212; 23 Sep 2025; MR. Compton Down, SU46979 26952; 12 Aug 2025; MR, MPa, ALu, AFoy. **1st for SU42.**

**NN *Anaphalis margaritacea* (Pearly Everlasting):** Bowling Club, SU433 041; 04 May 2025; ALu. Around edge of bowling green. Possibly planted originally but now seems to be established. **1st for SU40.**

**NN *Anemanthele lessoniana* (Pheasant's-tail):** Funtley, SU5613 0834; 14 May 2025; AHP, EJC. **1st for SU50.** Rowlands Castle north, SU7311; 26 Nov 2025; AHP, EJC. **1st for SU71.**

**NN *Anemone hupehensis* × *vitifolia* = *A. × hybrida* (Japanese Anemone):** Main Road, SU432 046; 04 May 2025; ALu. Beside footpath next to garden wall. **1st for SU40.** Kingsway Cut, Chandler's Ford, SU43654 21158; 12 Apr 2025; MR. Chandler's Ford, Brownhill Road, SU43261 21299; 13 Aug 2025; MR. **1st for SU42.**

**\*NN *Anisantha rigida* (Ripgut Brome):** Bidbury, Bedhampton, SU7047 0639; 01 Jun 2025; JAN. A few plants on top of tall wall near SE corner of the recreation ground. Keyed using Cope & Gray. Specimen retained. **1st for SU70.**

**\*\*NA *Artemisia absinthium* (Wormwood):** Visitors Centre, Winchester, England, GB, SU48062 29278; 21 Aug 2025; ASt. **1st for SU42.**

**NN *Baccharis halimifolia* (Tree Groundsel):** Westbourne, SZ0691; 22 Oct 2025; DL. 2 bushes 0694 9162 and 0690 9160. **1st for SZ09.**

**NN *Berberis darwinii* (Darwin's Barberry):** Teg Down area, Winchester, SU46460 30091; 17 Aug 2025; MR. **1st for SU43.**

**NN *Berberis julianae* (Chinese Barberry):** Holbury, SU429 035; 26 Oct 2025; ALu. One small shrub growing from under garden fence. **1st for SU40.**

**NA *Betula pendula* × *pubescens* = *B. × aurata* (Hybrid Birch):** Godshill, SU17717 15652; 09 Aug 2025; MR, JDy, MPa. **1st for SU11 since 1997.** Nea Meadows, SZ202 931; 13 Feb 2025; SDa. **1st for SZ29.**

**\*\*NA *Bidens cernua* (Nodding Bur-marigold):** Lakeside Country Park, SU445 177; 30 Sep 2025; DHub. **1st for SU41 since 1995.** Petersfield Lake, SU75437 22833; 07 Sep 2025; TCGR, JRi. **1st for SU72 since 1992.**

**NN *Bistorta amplexicaulis* (Red Bistort):** Edge of car park, Creech Wood, Denmead, SU64848 11238; 21 Aug 2025; NWA. **1st for SU61.**

**NN *Buddleja globosa* (Orange-ball-tree):** Lime Kiln Lane, SU427 041; 06 Apr 2025; ALu. Leaves much larger than *davidii*. In overgrown hedge near house. **1st for SU40.**

**\*\*NA *Buglossoides arvensis*** Leyden Bottom woods, near Clanfield, SU67879 18743; 06 May 2025; NWA. **1st for SU61 since 1969.**

**NN *Camelina sativa* (Gold-of-pleasure):** Mottisfont estate, SU311 268; 27 Apr 2025; MR, HFG. **1st for SU32.**

**NN *Campanula portenschlagiana* (Adria Bellflower):** Butt's Ash, SU417 056; 21 Dec 2025; ALu. One plant at base of wall. **1st for SU40.** Fareham Downend, SU5906; 21 Mar 2025; AHP, EJC. **1st for SU50 since 1999.**

**NN *Cardamine occulta* (Asian *C. flexuosa*):** Alver Valley Garden Centre, Gosport, SU5842 0025; 29 Jul 2025; JAN det. RMab. In pots of Clematis marked 'grown in the Cotswolds'. Specimen retained. **1st for SU50.**

**NA *Carex otrubae* × *remota* = *C. × pseudoaxillaris*** Ampfield Wood, SU39557 24133; 25 May 2025; JAN, DRA, EJC. Two large plants (tussocks) at edge of main W-E track, N side. Specimens retained. The flowers in one clump were 'typical' for the hybrid (with variable length of upper bract), but the other clump was nearer to *C. otrubae* (with short bracts). Both parents in close proximity and frequent generally. **1st for SU32.**

**NA *Centaurea scabiosa* (Greater Knapweed):** Blackfield, SU4402; 06 Jul 2025; ALu. **1st for SU40 since 1995.**

**NN *Ceratochloa cathartica* (Rescue Brome):** Rails Lane, SZ72974 98965; 26 Sep 2025; ST. Several plants in area of grassland on western verge. **1st for SZ79.**

**NN *Cerinthe minor* (Lesser Honeywort):** Bishopstoke, Eastleigh, SU4671 1983; 20 Apr 2025; DHub. **1st for VC.**

**NN *Chaenomeles speciosa* (Chinese quince):** Lime Kiln Lane, SU427 041; 06 Apr 2025; ALu. Twigs completely smooth. In overgrown hedge next to house. **1st for SU40.**

**\*NN *Chenopodium hybridum* (Maple-leaved Goosefoot):** Chalk spoil heap by White Dirt Lane, Catherington., SU69942 15098; 22 Aug 2025; NWA. **1st for SU61.**

**\*NN *Chenopodium murale* (Nettle-leaved Goosefoot):** Emsworth, South Street Car Park, SU7489 0561; 28 Sep 2025; ST. **1st for SU70 since 1969.**

**NN *Chenopodium pratericola*** Hayling Island, track to Gunner Point, SZ68945 99439; 16 Aug 2025; ST. **1st for SZ69.**

**NN *Chenopodium suecicum* (Swedish Goosefoot):** Brockhurst, Gosport, SU594 021; 01 Aug 2025; JAN det. EJC, GK. Strip roughly 30m × 1-2m where tree planting carried out earlier in the year around part of shopping centre car park. Possible source of seeds was shredded tree bark used for mulch which had been laid down around the trees. There was also a wider strip of *C. album* alongside, perhaps indicating where different bags or batches used. Also one patch of *C. ficifolium* present and occasional *Lipandra polysperma* and *Atriplex prostrata*. **1st for SU50.**

**NN *Choisya ternata* (Mexican Orange):** Kingsway Cut, Chandler's Ford, SU43767 21262; 12 Apr 2025; MR. **1st for SU42.**

**\*NA *Colchicum autumnale* (Meadow Saffron):** Dundridge, Hampshire, SU5734 1815; 13 Sep 2025; DTr. Beside passing place in lane. **1st for SU51 since 1951.**

**NN *Cota austriaca* (Austrian Chamomile):** Bramdean, SU608 275; 14 Jun 2025; MR. Part of arable 'wild flower' sowing. **1st for SU62.**

**NN *Cotinus coggygia* (Smoke-tree):** Skew Road junction, SU61352 06697; 21 Oct 2025; JPol. Self-sown. **1st for SU60.**

**NN *Cotoneaster conspicuus* × *dammeri* = *C. × suecicus* (Swedish Cotoneaster):** Wide Lane, Eastleigh, SU44573 16608; 26 Dec 2025; JPol. Well-naturalised. **1st for SU41.**

**NN *Cotoneaster franchetii* (Franchet's Cotoneaster):** Hinton Ampner, SU601 276; 14 Jun 2025; MR. **1st for SU62.**

**NN *Cotoneaster frigidus* × *salicifolius* = *C. × watereri* (Waterer's Cotoneaster):** Dibden Purlieu, SU417 055; 24 Nov 2025; ALu. One tree at entrance to nature reserve. Intermediate between *salicifolius* and *frigidus*. **1st for SU40 since 1987.**

**IN *Cotoneaster integrifolius* (Entire-leaved Cotoneaster):** Wide Lane, Eastleigh, SU4467 1666; 26 Dec 2025; JPol. Originally planted but now well-naturalised. **1st for SU41 since 2001.**

**NN *Cotoneaster obtusus* (Dartford Cotoneaster):** Edge of scrub on Portsdown Hill, near Fort Widley. Two trees covered in berries and numerous young shoots in the vicinity., SU65866 06306; 21 Nov 2025; NWA det. JF. **1st for SU60.**

**NN *Cotula australis* (Annual Buttonweed):** Loverose Way Winchester, SU481 293; 03 Jan 2025; NWA. **1st for SU42.** Lymington, SZ327 956; 06 Jan 2025; NWA. **1st for SZ39.**

**IN *Crassula helmsii* (New Zealand Pigmyweed):** Bidbury, Bedhampton, SU704 063; 27 May 2025; JAN, JDew. Small patch (less than 1 sq m) in waterlogged area within meadow. **1st for SU70.**

**NA *Crataegus laevigata* × *monogyna* = *C. × media*** Wintershill, SU52574 18192; 29 Jul 2025; MR, JPol, AHP, EJC. Part of a hedge replanting with cultivars of *C. monogyna*. **1st for SU51.**

**NN *Crocus speciosus* (Bieberstein's Crocus):** Bournemouth Upper Gardens, SZ07404 91776; 22 Oct 2025; DL. Scattered around in grassy area. **1st for SZ09.**

**NN *Cucumis sativus* (Cucumber):** One plant with flowers and fruit On manure, arable field edge at Stoke Wood, near Droxford, SU63798 18674; 08 Sep 2025; NWA. **1st for SU61.**

**NN *Cupressus macrocarpa* (Monterey Cypress):** Lower Upham 1 km south, SU5218; 05 Feb 2025; AHP, EJC. **1st for SU51.**

**NN *Cyclamen coum* (Eastern Sowbread):** Fareham Downend, SU5906; 21 Mar 2025; AHP, EJC. **1st for SU50.**

**NN *Cyperus eragrostis* (Pale Galingale):** Maurys Lane, Plaitford, SU28469 19255; 21 Sep 2025; TN. Several fruiting plants by fence. **1st for SU21.**

**NN *Cyrtomium fortunei* (Fortune's Holly-fern):** Disused railway line, Droxford, SU61174 18188; 13 Mar 2025; NWA. **1st for SU61.**

**NA *Daphne laureola* (Spurge-laurel):** Lanham Lane reservoir, SU45490 30380; 17 Apr 2025; EP. **1st for SU43 since 1995.**

**IN *Datura stramonium* (Thorn-apple):** Near West Tytherley, SU264 304; 05 Aug 2025; HGi. **1st for SU23 since 1973.**

**NN *Dipsacus laciniatus* (Cut-leaved Teasel):** M27, junction 7 eastbound sliproad, SU480 129; 02 Aug 2025; ST. 2-3 plants on verge. **1st for SU41.**

**NN *Dittrichia viscosa* (Woody Fleabane):** Central reservation of M271, Nursling, SU37124 15675; 12 Oct 2025; NWA. At least three clumps of plants spaced out along the central reservation of the dual carriageway. **1st for SU31.** One very large flowering plant growing on the hard shoulder of the A27, Farlington, just before the turning for the A3., SU68948 05290; 30 Oct 2025; NWA. **1st for SU60.**

**NA *Drosera anglica* × *rotundifolia* = *D. × obovata* (Hybrid Sundew):** Vales Moor, near Burley, SU19294 03940; 29 Jun 2025; NWA. A small number of hybrids demonstrating hybrid vigour and characteristic leaf shape. **1st for SU10 since 2005.**

**NN *Elaeagnus macrophylla* (Broad-leaved Oleaster):** Pylewell, Tanners Lane area, SZ36354 95797; 16 Aug 2025; MR, RCR, AMC. **1st for SZ39.**

**\*NA *Epilobium lanceolatum* (Spear-leaved Willowherb):** Hambledon, 3 km north., SU6417; 18 Jun 2025; AHP, EJC. **1st for SU61 since 1991.**

**NN *Erigeron bonariensis*** Fratton Traincare Depot, SZ6568 9990; 30 Nov 2025; ST. Frequent behind fence along roadside. **1st for SZ69.**

**NN *Erigeron karvinskianus* (Mexican Fleabane):** Blendworth New Barn Farm, SU7114; 03 Dec 2025; AHP, EJC. **1st for SU71.**

**\*NA *Eryngium campestre* (Field Eryngo):** Winchester, SU47274 26370; 22 Jul 2025; TN, GMac det. TN. Found by Gavin Maclean, spotted from car when passing. Photos sent to TN. TN and GM visited on 22 July. Two plants present on verge edge. One large, flowering example plus one rosette. Origin unknown, but feasible carried on vehicle tyre. **1st for SU42.**

**\*\*NA *Erysimum cheiranthoides* (Treacle-mustard):** Near Fir Tree Lane, SU48481 17508; 23 Sep 2025; KN. **1st for SU41 since 2002.**

**NN *Euonymus fortunei*** Sprawling plant under scrub and trees by Badger Farm Road, Compton. Possibly var. 'Emerald Gaiety', SU46929 27002; 09 Sep 2025; NWA. **1st for SU42.**

**NN *Euphorbia characias* (Mediterranean Spurge):** Hambledon, 3 km north., SU6417; 18 Jun 2025; AHP, EJC. **1st for SU61.**

**\*NN *Euphorbia cyparissias* (Cypress Spurge):** Teg Down area, Winchester, SU46247 30180; 17 Aug 2025; MR. **1st for SU43.**

**NN *Euphorbia mellifera* (Canary Spurge):** Holbury, SU428 037; 26 Oct 2025; ALu. One large plant near pond edge. **1st for SU40.**

**\*NA *Filago germanica*** In gravel by lane between Lower Beckford and Lovelocks, SU63065 10696; 16 Jun 2025; NWA. **1st for SU61.**

**NN *Galega officinalis* (Goat's-rue):** Many plants (both white and lilac forms) on grassland, MOD site, Leydene, SU67700 19186; 13 Sep 2025; NWA. **1st for SU61.**

**NN *Gaultheria mucronata* (Prickly Heath):** Chandler's Ford, Lakewood Road, SU43640 21340; 03 Sep 2025; MR. **1st for SU42.**

**NA *Gentianella amarella* subsp. *amarella*** Teg Down, Winchester, Hampshire, SU45212 30353; 22 Aug 2025; EP. **1st for SU43 since 1995.**

**NN *Geranium macrorrhizum* (Rock Crane's-bill):** Braishfield Manor, SU375 264; 19 Apr 2025; MR, RCR. **1st for SU32.**

**NA *Geranium pratense* (Meadow Crane's-bill):** Havant PO9, UK, SU72195 06678; 28 Apr 2025; RHWa. **1st for SU70.**

**NN *Glebionis coronaria* (Crown Daisy):** Near Fir Tree Lane, SU48476 17489; 23 Sep 2025; KN. **1st for SU41.**

**\*NA *Glebionis segetum* (Corn Marigold):** Bramdean, SU608 275; 14 Jun 2025; MR. Part of arable 'wild flower' sowing. **1st for SU62.**

**\*\*NA *Groenlandia densa* (Opposite-leaved Pondweed):** Bedhampton Works outfall, SU70551 06246; 17 Jun 2025; TN. Constant Springs, Emsworth, SU75076 06320; 27 Nov 2025; TN. Sizeable population in large pond.

**NN *Guizotia abyssinica* (Niger):** Romsey Road, Upton, SU37412 17105; 17 Nov 2025; TN. One plant in layby. **1st for SU31.**

**NN *Hedera colchica* (Persian Ivy):** Chandler's Ford, Brownhill Road, SU43908 21180; 13 Aug 2025; MR. **1st for SU42.**

**\*NA *Helleborus foetidus* (Stinking Hellebore):** Blackfield, SU444 025; 06 Jul 2025; ALu. 1 plant at start of footpath. **1st for SU40.**

**NN *Hibiscus syriacus* (Syrian Ketmia):** Southsea PO4, UK, SZ66875 99100; 07 Sep 2025; RHWa. **1st for SZ69.**

**\*NA *Himantoglossum hircinum* (Lizard Orchid):** Gosport, SU50; 16 Jun 2025; MGI det. TN. Single flowering spike. TN notified via Bob Wardell. Finder posted to iNaturalist. Photo by Mike Glavin. **1st for SU50.**

**IN *Hydrocotyle ranunculoides* (Floating Pennywort):** Lower Upham 1 km south, SU5218; 05 Feb 2025; AHP, EJC. Infesting a single pond. **1st for SU51.**

**\*\*NA *Hypopitys monotropa* (Yellow Bird's-nest):** Ampfield Wood, SU41600 24385; 12 Jun 2025; FC det. TN. Single clump found by Frankie Collings (daughter of Ginnie Copsey) whilst jogging. First record for Ampfield Wood since 1936. **1st for SU42 since 1997.**

**NA *Juncus conglomeratus* × *effusus* = *J. × kern-reichgeltii*** Ampfield Wood, SU395 240; 25 May 2025; JAN, DRA, EJC. Just inside woodland on W side of N-S track. **1st for SU32.**

**NN *Kerria japonica* (Kerria):** Fareham Downend, SU5906; 21 Mar 2025; AHP, EJC. **1st for SU50.**

**NN *Kniphofia uvaria* (Red-hot-poker):** Havant PO9, UK, SU72428 08130; 06 May 2025; RHWa. **1st for SU70.**

**NN *Lamium maculatum* (Spotted Dead-nettle):** Blendworth New Barn Farm, SU7114; 03 Dec 2025; AHP, EJC. **1st for SU71.**

**\*NN *Laphangium luteoalbum*** Alecto Rd and Alley, SZ6099; 21 Aug 2025; MaW. Victorian terraced housing (paved). Gosport, SZ6136 9917; 30 Apr 2025; JAN. Locally frequent along paved coastal path. Ferry Gardens, Gosport, SZ623 998; 01 Aug 2025; JAN. Abundant to dominant in one flower bed by ferry office. Southsea PO4, UK, SZ66799 99071; 07 Sep 2025; RHWa. Southsea PO4, UK, SZ67030 99147; 07 Sep 2025; RHWa. **1st for SZ69.**

**NN *Larix kaempferi* (Japanese Larch):** Fawley Enclosure, SU424 049; 06 Apr 2025; ALu. Cones shorter and squatter than hybrid, with reflexed scales. Along edge of track. **1st for SU40 since 1998.**

**\*NA *Lathyrus japonicus* (Sea Pea):** Hurst Point, SZ308 900; 28 Jun 2025; PHu. [This looks like a small expansion of the known patch on the edge of SU38 – MR] **1st for SZ39.**

**\*NA *Lepidium campestre* (Field Pepperwort):** Entrance to Hipley Barn Farm, near Southwick, SU62181 10180; 07 May 2025; NWA. Very plentiful on road verge and in farm yard. **1st for SU61 since 1999.**

**NN *Leucanthemum lacustre* × *maximum* = *L. × superbum* (Shasta Daisy):** Hambledon, 3 km north., SU6417; 18 Jun 2025; AHP, EJC. **1st for SU61 since 1998.**

**NA *Lipandra polysperma* (Many-seeded Goosefoot):** Havant Road, Horndean, SU70835 12552; 31 Oct 2025;



TN. A few plants in ditch amidst Galinsoga. **1st for SU71 since 1997.**

**NN *Lunaria rediviva* (Perennial Honesty):** Chandler's Ford, Brownhill Road, SU43610 21336; 13 Aug 2025; MR. **1st for SU42.**

**NA *Luzula forsteri* × *pilosa* = *L. × borrieri*** Mottisfont estate, SU3096 2722; 27 Apr 2025; MR, HFG. **1st for SU32 since 2005.**

**NA *Lycopsis arvensis*** Romsey Road, Nursling, SU38059 16125; 07 Sep 2025; TN. On recently disturbed verge. **1st for SU31 since 1999.**

**NN *Malva alcea* (Greater Musk-mallow):** Roadverge, Wickham Road between Fareham and Wickham, SU57902 08731; 31 Jul 2025; NWA det. MR. **1st for SU50.**

**NN *Mirabilis jalapa* (Marvel-of-Peru):** Broadwater Road, Townhill Park, Southampton, SU44878 15059; 03 Oct 2025; JPol. Escaped, by junction with Meggeson Avenue. **1st for SU41.**

**\*NA *Misopates orontium* (Weasel's-snout):** Botley Allotments, SU42900 34721; 27 Sep 2025; TN. **1st for SU43.**

**IN *Muehlenbeckia complexa* (Wireplant):** Chandler's Ford, Park Road, SU43367 21888; 15 Aug 2025; MR. Established in street from nearby garden. **1st for SU42.**

**\*\*NA *Nepeta cataria* (Cat-mint):** Hayling Billy Line, SU71672 03359; 24 Jul 2025; TN. Single flowering plant on recently disturbed gravel soil following footpath upgrade. **1st for SU70.**

**NN *Nigella damascena* (Love-in-a-mist):** Dibden Purlieu, SU413 059; 24 Nov 2025; ALu. Growing in pavement cracks. Harrier Way, SU428 045; 06 Apr 2025; ALu. **1st for SU40 since 2004.** Teg Down area, Winchester, SU46234 30172; 17 Aug 2025; MR. **1st for SU43.**

**NN *Nothofagus obliqua* (Roble):** Lord's Wood, SU3971 1688; 09 Apr 2025; MWR. 1.5m bush near track in wood, SU 3971 1688. **1st for SU31.**

**NN *Nymphaea* × *marliacea*** Wintershill, SU5218; 29 Jul 2025; MR, JPol, AHP, EJC. **1st for SU51.**

**NN *Ornithogalum umbellatum* (Garden Star-of-Bethlehem):** Grassy road verge, near Sainsbury (one plant), SU67862 09764; 01 May 2025; NWA. **1st for SU60 since 1969.** Grassland, churchyard, Newtown, SU61134 12663; 06 May 2025; NWA. **1st for SU61 since 1998.**

**\*NA *Orobancha hederæ* (Ivy Broomrape):** Stamford Avenue, SZ71125 99032, SZ71122 99064; 22 Sep 2025; ST. Around base of small Sambucus among Hedera. **1st for SZ79.**

**NN *Oxalis exilis* (Least Yellow-sorrel):** Hayling Island, Victoria Avenue, SZ71696 99025; 18 Aug 2025; ST. Hayling Island, seafront, SZ7340 9829; 13 Oct 2025; ST. **1st for SZ79.**

**NN *Oxalis tetraphylla* 'Iron Cross'** Escaping from a small flower border and regenerating in cobbles along base of wall, High Street, Hambledon, SU64664 15085; 13 Sep 2025; NWA. **1st for SU61.**

**NN *Panicum miliaceum* (Common Millet):** Beachlands, Hayling Island, SZ70504 98959; 05 Oct 2025; JPol. Hayling Beachlands, SZ7050 9895; 15 Oct 2025; ST. **1st for SZ79 since 1999.**

**NN *Passiflora caerulea* (Blue Passionflower):** Lime Kiln Lane, SU431 046; 04 May 2025; ALu. On corner of road. Probably planted originally but now surviving after neglect. **1st for SU40.** Aleto Rd and Alley, SZ6099; 21 Aug 2025; MaW. Victorian terrace housing (pavement) Garden escapee. **1st for SZ69.**

**NN *Paulownia tomentosa* (Foxglove-tree):** Hedgerow, Liberty Road, Newtown, SU60236 13830; 13 Sep 2025; NWA. No sign of other Paulownia trees in the area. No garden the other side of the hedgerow. No obvious sign the tree was planted in this overgrown hedgerow. **1st for SU61.**

**NN *Photinia glabra* × *serratifolia* = *P. × fraseri* (Red Tip Photinia):** Holbury, SU426 026; 30 Sep 2025; ALu. A small immature plant growing in a sheltered hollow with birch and holly. **1st for SU40.**

**NN *Pinus radiata* (Monterey Pine):** Bishops Waltham, SU5416; 03 Aug 2025; MR. **1st for SU51 since 1999.**

**\*NA *Polypogon monspeliensis* (Annual Beard-grass):** In gravel track, junction of Lower Beckford Lane and footpath to Lovelocks, SU62924 10748; 16 Jun 2025; NWA. Lower Crabbick Road, on gravel by entrance to stables, SU63887 12154; 16 Jun 2025; NWA. **1st for SU61.**

**NN *Portulaca oleracea* (Common Purslane):** Waterloo Road, Havant, SU7183 0654; 03 Sep 2025; TN. Kerb side. **1st for SU70.**

**NA *Prunus domestica* × *spinosa* = *P. × fruticans* (Hybrid Sloe):** Coombe, SU6620; 03 Jul 2025; AHP, EJC. **1st for SU62.**

**NN *Pseudofumaria alba* (Pale Corydalis):** On stone wall, near Hambledon, SU65011 14368; 24 Apr 2025; NWA. **1st for SU61.**

**NN *Pseudofumaria lutea* (Yellow Corydalis):** Falconer Court, SU430 046; 04 May 2025; ALu. On garden wall. **1st for SU40.**

**NN *Pyracantha rogersiana* (Asian Firethorn):** Burton (N side), SZ1659 9520; 20 May 2025; MWR. Sepals in bud, pedicels and petioles glabrous. Roadside hedge opposite gardens, Salisbury road, SZ 1659 9520. **1st for SZ19.**

**NN *Quercus palustris* (Pin Oak):** Southsea, Portsmouth, UK, SZ66311 99755; 21 Sep 2025; RHWa. **1st for SZ69.**

**\*NA *Ranunculus parviflorus* (Small-flowered Buttercup):** Winchester, SU4427; 23 Apr 2025; DPe. **1st for SU42.** Hayling Beachlands, SZ70581 98880; 03 May 2025; TN. Dozen or so plants on S end of car park island. C.2m S of earth mound. **1st for SZ79.**

**NN *Raphanus sativus* (Garden Radish):** Mottisfont, W of Drove Copse, SU312 268; 20 Apr 2025; MR, RCR. Ganger Farm Sports Park, SU37440 23293; 17 Nov 2025; TN. **1st for SU32.**

**IN *Rosa rugosa* (Japanese Rose):** Lyndhurst, England, GB, SU31439 07113; 08 Aug 2025; CO. **1st for SU30.** Holden Lane, Alresford, England, GB, SU56159 26772; 10 May 2025; OD. **1st for SU52.** Broadway Lodge, Waterlooville,

England, GB, SU67834 12492; 03 Aug 2025; NB. **1st for SU61.**

**NN *Rosmarinus officinalis* (Rosemary):** Havant Warblington, SU7206; 06 Nov 2025; AHP, EJC. **1st for SU70.**

**NA *Rubus tuberculatus*** Ampfield, SU395 236; 08 Jun 2025; JAN. Bush along track S of Ampfield Wood. **1st for SU32.**

**NA *Rubus vestitus*** Teglease Down area, SU6519; 26 Jun 2025; EJC. **1st for SU61 since 1999.**

**NN *Rumex scutatus* (French Sorrel):** Burgess Road, Swaythling, SU43323 15617; 03 Oct 2025; JPol. On edge of Gurdwara Khalsa Darbar church and pavement. **1st for SU41.**

**NA *Salix caprea* × *cinerea* = *S. × reichardtii*** Godshill, SU17118 15868; 03 May 2025; MR. **1st for SU11.** Woodlands, Ashurst, SU3223 1071; 06 Aug 2025; MR. **1st for SU31.**

**NA *Schedonorus pratensis* × *Lolium perenne* = × *Schedolium loliaceum* (Hybrid Fescue):** Itchen Valley Country Park, water meadows, SU4516; 13 Aug 2025; TCGR det. MWi. **1st for SU41 since 2003.**

**\*NA *Schoenoplectus tabernaemontani* (Grey Club-rush):** North Boarhunt east, SU60920 10760; 23 May 2025; AHP, EJC. SU6092 1076 growing on edge of small pond. **1st for SU61.**

**NN *Scilla forbesii* (Glory-of-the-snow):** Lime Kiln Lane, SU429 044; 06 Apr 2025; ALu. 1 plant on road verge near gardens. **1st for SU40.**

**NN *Scilla sardensis* (Lesser Glory-of-the-snow):** Winchester Cathedral, Lower Deanery, SU4836 2912; 06 Mar 2025; AST. Photo, fused stamens, perianth blue. **1st for SU42.**

**NN *Scilla siberica* 'Alba'** Valley Park, SU4316 2066; 20 Mar 2025; MR. **1st for SU42.**

**NN *Senecio inaequidens* (Narrow-leaved Ragwort):** Fareham Reach, Gosport, SU5834 0443; 05 Aug 2025; JAN, EJC. Several plants in gravel along southern edge of Fareham Reach industrial estate. (First seen near here 2 years ago.) **1st for SU50.**

**NN *Setaria verticillata* (Rough Bristle-grass):** Newtown Lane, SZ713 998; 21 Oct 2025; ST. **1st for SZ79.**

**NN *Silene coronaria*** Havant PO9, UK, SU72237 06742; 28 Apr 2025; RHWa. **1st for SU70 since 1998.**

**NA *Silene dioica* × *latifolia* = *S. × hampeana* (Hybrid Campion):** Blackfield, SU443 029; 06 Jul 2025; ALu. In seeded wildflower area with both parents present. **1st for SU40 since 2005.**

**NA *Silybum marianum* (Milk Thistle):** Links Lane, Hayling Island, SZ7021 9924; 06 Nov 2025; ST. Several seedlings on recently seeded verge. **1st for SZ79.**

**NN *Sisyrinchium striatum* (Pale Yellow-eyed-grass):** Chandler's Ford, Brownhill Road, SU43574 21329; 13 Aug 2025; MR. Chandler's Ford, Park Road, SU43408 21381; 15 Aug 2025; MR. Established on roadside from nearby garden. **1st for SU42.**

**\*\*NN *Spergula arvensis* (Corn Spurrey):** Botley Allotments, SU42898 34720; 27 Sep 2025; TN. **1st for SU43.**

**\*\*NA *Stachys arvensis* (Field Woundwort):** Botley Allotments, SU42899 34721; 27 Sep 2025; TN. **1st for SU43 since 2000.**

**NA *Stellaria pallida* (Lesser Chickweed):** Bramshaw Telegraph 1km west, SU2116; 29 May 2025; AHP, EJC. **1st for SU21.**

**NN *Symphoricarpos orbiculatus* (Coralberry):** Westbourne, SZ0691; 22 Oct 2025; DL. Distinctive small fruit and leaves 0690 9160. **1st for SZ09.**

**IN *Symphytotrichum novi-belgii* × *lanceolatum* = *S. × salignum* (Common Michaelmas-daisy):** Rowlands Castle north, SU7311; 26 Nov 2025; AHP, EJC. **1st for SU71.**

**NN *Syringa vulgaris* (Lilac):** Little Somborne, SU3832; 22 Apr 2025; MR. Established on roadside outside garden. **1st for SU33.**

**\*NA *Taraxacum ronaë*** Fareham, Holmefield Avenue, SU5682 0506; 04 Apr 2025; JAN det. TCGR. Two or three plants in unimproved front garden lawn. At edge of lawn where soil a little bit more disturbed so probably naturally colonised. (First seen here 25 Dec 2014 and again in 2017 and 2021 when photos posted on Facebook Taraxacum group were identified as *T. ronaë* by Tim Rich and confirmed by John Richards. See Hampshire Flora Group newsletter 65 pp 29 & 30. **1st for SU50.**

**NA *Thlaspi arvense* (Field Penny-cress):** Breamore (S side), SU1589 1779; 13 Apr 2025; MWR. 2 plants, garden fence/pavement junction, Salisbury Road (A338), SU 1589 1779. **1st for SU11 since 2000.**

**\*NA *Torilis nodosa* (Knotted Hedge-parsley):** Soberton village east, SU6115; 10 Dec 2025; AHP, EJC. **1st for SU61.**

**\*\*NA *Trifolium fragiferum* (Strawberry Clover):** Stanley Park, Gosport, SZ592 989; 25 Aug 2025; JAN. **1st for SZ59 since 2005.**

**NN *Trifolium incarnatum* subsp. *incarnatum* (Crimson Clover):** Mottisfont, W of Drove Copse, SU312 268; 20 Apr 2025; MR, RCR. Mottisfont estate, SU311 268; 27 Apr 2025; MR, HFG. **1st for SU32.** Growing on chalk in between grape vines, Hambledon vineyard, SU64920 16409; 08 May 2025; NWA. Odd patches throughout the vine field. **1st for SU61.** Bramdean, SU608 275; 14 Jun 2025; MR. Part of arable 'wild flower' sowing. **1st for SU62.**

**\*\*NA *Trifolium medium* (Zigzag Clover):** Under bracken, road verge by *Equisetum × bowmanii*, SU29663 10512; 29 Jun 2025; NWA. **1st for SU21 since 1999.**

**NN *Trifolium michelianum*** Mottisfont estate, SU311 268; 27 Apr 2025; MR, HFG. Subsp. *balansae* 'Balansa Clover' (sold commercially in seed mixes or on its own as nitrogen fixer). **1st for VC.**

**\*NA *Valeriana officinalis* (Common Valerian):** Little Somborne, SU38443 32815; 21 Jul 2025; MR, MPa. **1st for SU33 since 2000.**

**NA *Valerianella carinata* (Keeled-fruited Cornsalad):** Rowlands Castle north, SU7311; 26 Nov 2025; AHP, EJC. **1st for SU71 since 1998.**



**NN *Verbascum blattaria* f. *alba*** Canon street East car park, Lymington, SZ32533 95664; 18 Aug 2025; NWA. White flowered forma. Growing at the base of a wooden post in car park. **1st for SZ39.**

**NN *Verbena bonariensis* (Argentinian Vervain):** Teg Down area, Winchester, SU46268 30182; 17 Aug 2025; MR. **1st for SU43.**

**NN *Viburnum lantana* × *rhytidophyllum* = *V. × rhytidophylloides*** Disused railway cutting, Meonstoke, SU61527 19588; 04 May 2025; NWA det. MR. Previously determined by Martin Rand by photos. **1st for SU61.**

**\*NA *Vulpia fasciculata* (Dune Fescue):** Bournemouth West Cliff, SZ0846 9066; 22 May 2025; DL. **1st for SZ09.**

## VC12 records

Compiled by Tony Mundell

**T**his report covers records for 16 July 2025 to 27 November 2025, and here is my personal selection of what I thought were the more interesting records during that period. Once again I must thank the people who continue to send me records. As there are now relatively few people who make records in VC12 I am afraid that the following list is rather dominated by my own records, though often when accompanied by another botanist.

The most exciting botanical find in this period was the confirmation of Broad-leaved Cudweed *Filago pyramidata* at Bourley near Aldershot. Tristan Norton had noticed that a few plants here in 2024 did not look quite right for Common Cudweed *Filago germanica*, but it was not until a fresh flowerhead collected in July 2025 was examined closely under a microscope that it proved to be *F. pyramidata*. Tristan's close-up images of the florets were confirmed by Tim Rich. There are many records for *F. pyramidata* for both VC11 and VC12 but nearly all of them are very old, dating from 1850. Tristan's record given below is significant as it implies that this species found on the army's High Speed Test Track may have been introduced on tyres of military vehicles. That means that it could be on many other damp sandy tracks on MOD land, overlooked as the very similar *F. germanica*. Coral Necklace *Illecebrum verticillatum* (which also grows at the *F. pyramidata* site) has exploded across all the MOD land in VC12 spread by military vehicles.

The initial discovery of Marsh Fern *Thelypteris palustris* at Foley Manor by an ecologist from the South Downs National Park was a pleasant surprise as there are few sites for it in VC12. When Cathy Wilson and I made a very brief visit to see it I was amazed at the quantity that we saw.

A visit to both Fleet Pond and Elvetham Heath aimed at showing some of the scarcer native plants to two reserve managers from Hart Countryside Service was productive. I managed to show them Lesser Water-plantain *Baldellia ranunculoides*, Small-fruited Yellow-sedge *Carex oederi*, Dodder *Cuscuta epithymum*, Six-stamened Waterwort *Elatine hexandra*, Needle Spike-rush *Eleocharis acicularis*, Shoreweed *Littorella uniflora*, Royal Fern *Osmunda regalis*, Pillwort *Pilularia globulifera*, Greater Spearwort *Ranunculus lingua*, Grey Club-rush *Schoenoplectus tabernaemontani*, Marsh Fern *Thelypteris palustris*, and Lesser Bulrush *Typha angustifolia*. I was hoping this might give the rarities a bit more protection, but unfortunately Jon Wells has already moved away to another job. Sadly, this seems to be par for the course as other reserve managers that I have shown the special plants under their care have later moved on.

In a similar way in the last few years I have been showing the more threatened plants to some of the reserve managers from the Hampshire & Isle of Wight Wildlife Trust who manage MOD land. In 2024 I showed the last surviving VC12 site for Ivy-leaved Bellflower *Wahlenbergia hederacea* as well as local sites for Marsh Clubmoss *Lycopodiella inundata* to David Boddy. That resulted in targeted conservation work and similarly when I showed David this year how one of the few VC12 sites for Wood Horsetail *Equisetum sylvaticum* was getting overgrown with seedlings of Western Hemlock *Tsuga heterophylla*, he organised contractors to clear away the conifers.

Amongst other rare native plants listed here I was very pleased that Dave Pearson has found that Wood Barley *Hordelymus europaeus* is still present at Ackender Wood. It has been known there since 1840 but is now apparently down to two flower spikes. There are a few other old sites for it including Chawton Park (1805) Old Alresford (1850) and near Bentley Station (1946–51) and it might even persist as grasses are easily overlooked.

I see that only a single plant of the Red-tipped Cudweed *Filago lutescens* was found by David Leadbetter on the well-known site for it near Fleet. It was originally found there by Lady Anne Brewis in 1980. As many people may remember I organised small work parties for each of the following 25 years to annually disturb the soil in autumn. This led to hundreds of plants in many years, peaking at an estimate of 2,250 in 2004. I eventually had to hand over management to Hampshire County Council, but it has now been wavering on the brink of local extinction here for the last decade. What very few people know is that I found a new site for it near Wishanger in 2003. The land owner at that time was very helpful and permitted visits provided that he was contacted beforehand. He insisted that the precise location was not recorded on any database which of course I agreed to. I knew that the land was later sold, but I did not find out a contact for the current landowner until 2025. I tried an approach through someone who knows her, but sadly she does not want to engage, so I have no idea if it persists there.

I am also pleased that David Caals has found the scarce archaeophyte Oak-leaved Goosefoot that used to be within *Chenopodium* but is now called *Oxybasis glauca*. Another scarce annual archaeophyte listed below is Maple-leaved Goosefoot *Chenopodium hybridum*. It sometimes appears where farmers sow particular seed mixtures though usually it does not persist long in the same spot. Other uncommon archaeophytes listed below include Fine-leaved Fumitory *Fumaria parviflora*, Dense-flowered Fumitory *F. densiflora*, Cat-mint *Nepeta cataria*, Night-flowering Catchfly *Silene noctiflora* and Field Woundwort *Stachys arvensis*, mostly thanks to John Moon.

Turning to the neophytes (aliens) Warty-cabbage *Bunias orientalis* has been recorded in several places near Crondall since 1955, but I have no VC12 records for it elsewhere. While setting out to survey a nearby poorly-recorded monardella I called in briefly at where I had last seen it in 2008 and was pleased to see that it is still hanging on.

When I first found Lizard's tail *Saururus cernuus* at Foley Manor, I wrote an article about it in *BSBI News* 83 (January 2000), p. 40–41. I pointed out that it was clearly a bit of a thug and would probably be very difficult to eradicate. Indeed, it now completely surrounds its triangular pond with a perimeter of about 300m in a strip c.2–3m wide.

Several records are given below for False Virginia-creeper *Parthenocissus inserta*. As Atlas 2020 says, this is much confused with Virginia Creeper *P. quinquefolia* and may even be conspecific with it. Stace does separate them, and they seem distinct to me with *P. inserta* having fewer tendril branches and lacking the adhesive tips to each tendril that are found on *P. quinquefolia*.

The neophytes below include Balkan Clary *Salvia nemorosa* which I have not seen before away from gardens. Another neophyte of interest is Large-sepal Hawthorn *Crataegus rhipidophylla*. This is almost certainly under-recorded as it is typically found in planted hedgerows of ordinary Hawthorn *C. monogyna*. To find it look for fruits that are significantly larger than those of Hawthorn and of a deeper red. The leaf shape also differs.

Yellow Bristle-grass *Setaria pumila* seems to be increasing, especially on arable farmland. The same is true of Thorn-apple *Datura stramonium*, Gold-of-pleasure *Camelina sativa* and Cockspur *Echinochloa crus-galli*. Another increasing plant introduced by farmers is Fodder Vetch *Vicia villosa* which can be mistaken for Tufted Vetch *V. cracca*.

***Acanthus mollis* (Bear's-breech)** Basingstoke SU6106 5041, a large patch of plants beside the sports field car park, presumably originally planted, Tony Mundell 5 Sep 2025.

***Acer rubrum* (Red Maple)** Wyke Green SU7228 2690, a large tree, presumably originally planted, though in a curious place as it is beside a minor track (also a public footpath) at least 100m from the nearest house, Tony Mundell 26 Aug 2025.

***Agrimonia procera* (Fragrant Agrimony)** Millfield, Basingstoke SU6638 5361, one patch of *A. procera* with many plants of *A. eupatoria* nearby, Andrew Cleave & Paul Sterry 2 Aug 2025.

***Agrostis curtisii* (Bristle Bent)** Blackwater SU8410 5936, several plants beside grassy track, Tony Mundell & Mike Marshall 23 Jul 2025.

***Ailanthus altissima* (Tree-of-heaven)** MOD Barton Stacey, Area 2 SU4342, originally planted and spreading, John Moon 20 Aug 2025.

***Akebia quinata* (Five-leaf Akebia)** St Giles Hill Graveyard SU490293, garden escape, growing well, Anna Stewart & Alison Chase 6 Aug 2025.

***Allium carinatum* (Keeled Garlic)** Abbots Ann, Andover SU329437, uninvited presence in rough grassland. Last seen here 30 years ago, 20 plants, John Moon 25 Jul 2025.





**Keeled Garlic *Allium carinatum*, Abbots Ann, Andover. John Moon**

***Allium triquetrum* (Three-cornered Garlic)** Winchester, Palm Hall Close SU4900 2938, growing in cracks by wall and pavement, escaping garden, also Winchester St Giles Hill, Milesdown SU4894 2930, vegetative only, both Anna Stewart 19 Sep 2025. St John's Church, Winchester SU4869 2943, spreading in graveyard, Anna Stewart 30 Sep 2025.

***Alnus cordata* (Italian Alder)** Winchester, Water Lane SU4862 2943, presumably planted, David Leadbetter 14 Aug 2025. Barton Stacey, Area 2 SU4343, John Moon 20 Aug 2025.

***Alnus incana* (Grey Alder)** Winchester, Water Lane SU4862 2943, presumably planted, David Leadbetter 14 Aug 2025.

***Amaranthus blitoides* (Prostrate Pigweed)** Cow Down SU379437, several large plants in field corner, Tristan Norton 17 Aug 2025.

***Anisantha diandra* (Great Brome)** S of Burghclere SU4777 6030 on arable field edge, also E of Burghclere SU4876 6117 n a follow field, Tony Mundell & Mike Marshall 12 Sep 2025.

***Anthemis cotula* (Stinking Chamomile)** Hook SU7231 5550, arable field, Mike Marshall 22 Jul 2025. Westover Farm, Clover Field SU355412, John Moon 29 Jul 2025.

***Asparagus officinalis* (Garden Asparagus)** Hawley, Fernhill Lane SU8560 5824, on roadside verge, Tony Mundell & Mike Marshall 23 Jul 2025.

***Asplenium ceterach* (Rustyback)** One plant on exterior stone wall of St Swithuns Church, near entrance, Martyr Worthy SU515327, Nick Aston 31 Oct 2025.

***Atropa belladonna* (Deadly Nightshade)** St Giles Hill Graveyard SU4911 2932, very large clump with fruits and flowers. Cutting from plant at Matterley Estate 2021, Anna Stewart & Martin Rand 17 Jul 2025. Porton Down, The Breck SU2502 3818, one plant in fruit, Anne Appleyard & Pat Woodruffe 27 Sep 2025. Porton Down, Isle of Wight Wood SU2536 3680, Anne Appleyard & Ailsa McKee 18 Oct 2025.

***Avenula pubescens* (Downy Oat-grass)** Leckford Golf Course SU367367, Anna Stewart & Dave Pearson 6 Aug 2025.

***Azolla filiculoides* (Water Fern)** Itchen Stoke Mill SU5679 3176, locally plentiful in a ditch a few metres from the River Itchen, Tony Mundell & Alton Nat. History Society 9 Aug 2025.

***Baldellia ranunculoides* (Lesser Water-plantain)** Fleet Pond SU8243 5500, thriving at SU8243 5500, SU8243 5501 and SU8242 5503, though now on mud as water level is so low, Tony Mundell, Jon Wells & Lily Walwin 12 Aug 2025.

***Barbarea intermedia* (Medium-flowered Winter-cress)** St Giles Hill Graveyard SU490293, a few plants flowering, Anna Stewart & John Poland 26 Aug 2025. Trooper Bottom SU7295 2768, public footpath along arable field edge, Tony Mundell 26 Aug 2025.

***Berberis darwinii* (Darwin's Barberry)** Basingstoke SU6157 4922, in woodland area, Tony Mundell 18 Aug 2025.

***Berberis vulgaris* (Barberry)** Hackwood Park SU6451 5063 and SU6458 5061, still present here in the roadside hedgerow where I have known it for many years, but with only a few fruits this year, Tony Mundell 11 Sep 2025.

***Brassica nigra* (Black Mustard)** NW of Bentley SU770441, one large plant, now with leaves dead, beside the footpath. Identified from its fruits that still have much seed, Tony Mundell 15 Sep 2025.

***Briza media* (Quaking-grass)** Quarley Churchyard SU272439, John Moon 18 Jul 2025. Leckford Golf Course SU3668 3675, Anna Stewart & Dave Pearson 6 Aug 2025. St Giles Hill Park, Winchester SU4883 2921, Anna Stewart & Dominic Hiscock 26 Aug 2025.

***Bromopsis inermis* (Hungarian Brome)** Elvetham Heath SU8055 5571, a patch of tall fruiting plants beside a balancing pond, Tony Mundell, Jon Wells & Lily Walwin 12 Aug 2025.

***Buglossoides arvensis* (Field Gromwell)** W of Crondall SU7873 4855, SU7880 4853, SU7899 4848, a few plants in flower or seed at the edge of corn crop, Tony Mundell 18 Jul 2025.



**Field Gromwell *Buglossoides arvensis*, near Crondall. Tony Mundell**

***Bunias orientalis* (Warty-cabbage)** W of Crondall SU7904 4852, still present where I have known it for many years. At least a dozen large plants in fruit on the top of a roadside bank, Tony Mundell 18 Jul 2025.

***Calystegia sepium* subsp. *sepium* f. *colorata* (Hedge Bindweed)** Hawley SU8601 5759, a pink flowered form beside Cove Brook, Tony Mundell 25 Jul 2025.

***Camelina sativa* (Gold-of-pleasure)** South Wonston SU4742 3554, frequent in sown pollination/cover crop, Tristan Norton 30 Aug 2025. Field south of Bramdown Copse, north headland SU528470, and west headland SU525470, probably sown in pheasant mix, John Moon 29 Sep 2025.

***Campanula glomerata* (Clustered Bellflower)** St Giles Hill Graveyard SU490293, Anna Stewart & Alison Chase 6 Aug 2025.

***Campanula rotundifolia* (Harebell)** Leckford Golf Course SU3668 3675, Anna Stewart & Dave Pearson 6 Aug 2025.

***Campanula trachelium* (Nettle-leaved Bellflower)** Quarley Churchyard SU272439, John Moon 18 Jul 2025. Cole Henley, Paul's Heath, flowering plants on roadside verge at SU4737 5177 and SU4734 5172, Tony Mundell & Dave Pearson 22 Aug 2025. N of Upton Grey SU6927 4984, single flowering plant beside footpath, Tony Mundell & Mike Marshall 22 Sep 2025. Abbots Ann SU3378 4402, several stems in flower, roadside bank of minor road, John Moon 16 Oct 2025.

***Carex canescens* (White Sedge)** Foley Manor SU8292 3044, three small fruiting plants in a dried-up puddle south-east of a ditch, Tony Mundell & Cathy Wilson 25 Aug 2025.

***Carex echinata* (Star Sedge)** Hawley Common SU8367 5800, a few plants surviving in the dried-up ditch, Tony Mundell & Jonathan Sleath 2 Oct 2025.

***Carex muricata* subsp. *pairae* (Prickly Sedge)** Hawley, Fernhill Lane SU856582, in many places on the sandy verge of this road, Tony Mundell & Mike Marshall 23 Jul 2025. Foley Manor SU8244 3114, at track junction, Tony Mundell, Cathy Wilson & Isobel Girvan et al 24 Jul 2025. S of Eversley SU7756 6167, a few plants beside footpath, Tony Mundell & Mike Marshall 8 Sep 2025.

***Carex otrubae* (False Fox-sedge)** Bramshill SU7594 6080, several plants in wet woodland beside fenceline close to a pond, Tony Mundell & Mike Marshall 8 Sep 2025.

***Carex rostrata* (Bottle Sedge)** Foley Manor, many plants extending for many metres in a ditch, at least from SU8292 3045 to SU8295 3047, Tony Mundell & Cathy Wilson 25 Aug 2025.

***Carex spicata* (Spiked Sedge)** Quarley Churchyard SU272439, John Moon 18 Jul 2025. St Giles Hill Graveyard SU490293, Anna Stewart & Alison Chase 6 Aug 2025.

***Carex viridula* (Small-fruited Yellow-sedge)** Fleet Pond, Gelvert Marsh SU8246 5498, many plants. It has all the female spikes clustered at the stem apex with the single male. Fruits measure 1.9mm to 2.5mm long, many more plants at SU8248 5496 and SU8247 5494, Tony Mundell, Jon Wells & Lily Walwin 12 Aug 2025.

***Catapodium rigidum* (Fern-grass)** Blackwater SU8486 5953, SU8477 5957, on roadside pavement, Tony Mundell & Mike Marshall 23 Jul 2025.

***Centaurea cyanus* (Cornflower)** Westover Farm, Dipden Bottom SU3469 3995, single plant on field edge, John Moon 4 Aug 2025. Wyke Green SU7217 2665, several flowering plants on a soil spoil heap close to the public footpath, Tony Mundell 26 Aug 2025.

***Centaurea debeauxii* (Chalk Knapweed)** St Giles Hill Graveyard SU4911 2932, Anna Stewart & Martin Rand 17 Jul 2025. Quarley Churchyard SU272439, John Moon 18 Jul 2025. Old Basing SU6717 5242, about 60 plants in a garden where the grass has not been cut. This garden has about 9 inches of topsoil over solid chalk, Rob Still 23 Jul 2025. MOD Barton Stacey, Area 2 SU4343, John Moon 20 Aug 2025.

***Cephalanthera damasonium* (White Helleborine)** MOD Barton Stacey, Area 2 SU436431, thinly scattered amongst beech trees, John Moon 20 Aug 2025.

***Cerastium arvense* (Field Mouse-ear)** Porton Down, Roche Court Down SU2474 3679, on anthill, Anne Appleyard & Pat Woodruffe 25 Oct 2025.

***Ceratochloa cathartica* (Rescue Brome)** Basingstoke SU6020 4792, several plants in grassy area beside footpath, Tony Mundell 18 Aug 2025.

***Chaenorhinum minus* (Small Toadflax)** Westover Farm, Clover Field SU355412, Jon Moon 29 Jul 2025. Westover Farm, Gypsy Lane Field SU347405, John Moon 4 Aug 2025. South Wonston SU460358, frequent along kerb edge, along path and base of garden walls, also at SU4611 3554 in maize field to S of South Wonston, Tristan Norton 14 Aug 2025.

***Chenopodiastrum hybridum* (Maple-leaved Goosefoot)** Stapeley Down, Odiham SU7464 4835, several plants in sown headland, Tony Mundell 16 Jul 2025. NE of Cole Henley SU4725 5288, a few plants on an arable field edge, Tony Mundell & Dave Pearson 22 Aug 2025.

***Chenopodium ficifolium* (Fig-leaved Goosefoot)** Ashmansworth SU4214 5768, arable field edge, several plants, also SU4222 5767, many plants beside a manure heap, Tony Mundell & Dave Pearson 28 Jul 2025. South Wonston SU4742 3554, frequent in sown pollinator/cover crop, Tristan Norton 30 Aug 2025.

***Chrysosplenium oppositifolium* (Opposite-leaved Golden-saxifrage)** Foley Manor SU8229 3020, an example of its many locations in Reedy Copse, Tony Mundell & Cathy Wilson 25 Aug 2025.

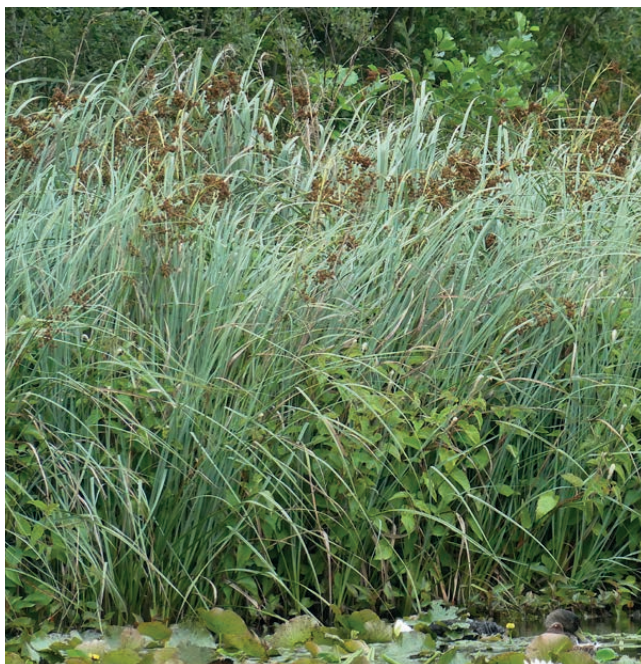
***Cirsium acaule* (Dwarf Thistle)** Leckford Golf Course SU367367, Anna Stewart & Dave Pearson 6 Aug 2025. Gratton Park, Sutton Scotney SU466397, locally frequent over area c. 50 m<sup>2</sup>, Tristan Norton 30 Aug 2025. Sutton Scotney Services, A34 SU4588 4000, a large patch of grassland at the Services that is heavily grazed by rabbits is developing quite a rich flora with plants like *Viola hirta* and *Cirsium acaule*, Tony Mundell & Holly Stanworth 14 Oct 2025.



***Cladium mariscus* (Great Fen-sedge)** Foley Manor SU8304 3074, covering a huge area extending into this pond, Tony Mundell & Cathy Wilson 4 Aug 2025.

***Clinopodium ascendens* (Common Calamint)** St Giles Hill Graveyard SU4911 2932, Anna Stewart & Martin Rand 17 Jul 2025. Upton Grey SU6928 4879, flowering plant on roadside verge. Teeth of lower calyx lobes 3.4mm long with hairs to 0.35mm long, corolla 15mm long, Tony Mundell & Mike Marshall 22 Sep 2025.

***Comarum palustre* (Marsh Cinquefoil)** Woolmer Forest SU7932 3327, a nice clump just south of Range 1 and near to the perimeter fence, Rob Free 1 Sep 2025.



**Great Fen-sedge *Cladium mariscus*, Foley Manor, Liphook. Tony Mundell**



**Common Calamint *Clinopodium ascendens*, Upton Grey. Tony Mundell**

***Cortaderia selloana* (Pampas-grass)** S of Eversley SU7751 6115, on ditch side along footpath, beside a gate, Tony Mundell & Mike Marshall 8 Sep 2025.

***Cotoneaster affinis* (Purpleberry Cotoneaster)** Track off Windmill Lane, Ibthorpe SU3749 5362, confirmation of existing record for this cotoneaster at this location, previously determined by Jeanette Fryer. Two small trees in hedgerow, Nick Aston 29 Sep 2025.



**Purpleberry Cotoneaster *Cotoneaster affinis*, Ibthorpe. Nick Aston**

***Cotoneaster bullatus* (Hollyberry Cotoneaster)** Ashmansworth SU4242 5759, a small tree in wood edge by road, Tony Mundell & Dave Pearson 28 Jul 2025.

***Cotoneaster lacteus* (Late Cotoneaster)** Basingstoke SU6136 4915, beside footpath, also SU6035 4794, tall shrub beside footpath through woods, Tony Mundell 18 Aug 2025.

***Cotoneaster pannosus* (Silverleaf Cotoneaster)** Basingstoke SU6106 5041, in hedgerow at the sports field car park, Tony Mundell 5 Sep 2025.

***Crataegus persimilis* (Broad-leaved Cockspurthorn)** Ashmansworth SU4244 5759, a small tree in wood edge by road, Tony Mundell & Dave Pearson 28 Jul 2025. Winchester, Water Lane SU4862 2943, presumably planted, David Leadbetter 14 Aug 2025.

***Crataegus rhipidophylla* (Large-sepalled Hawthorn)** N of Upton Grey SU6952 4928, in hedgerow together with *Crataegus monogyna*. Large fruits to 14mm wide x 13mm long, with sepals longer than wide. Leaves much more divided into long narrow lobes than *C. monogyna*, Tony Mundell & Mike Marshall 22 Sep 2025.

***Cucurbita pepo* (Marrow)** Basingstoke SU6114 5008, on a large heap of disturbed soil in an area of wasteland awaiting development, Tony Mundell 5 Sep 2025.





**Large-sepalled Hawthorn *Crataegus rhipidophylla*, near Upton Grey. Tony Mundell**

***Cuscuta epithymum* (Dodder)** Elvetham Heath, 5 patches at SU8052 5583 and one at SU8053 5582, but all very frazzled up and close to death in the current drought, Tony Mundell, Jon Wells & Lily Walwin 12 Aug 2025.

***Cynoglossum officinale* (Hound's-tongue)** Westover Farm, Rowbury Wood, NW edge SU347398, John Moon 4 Aug 2025. MOD Barton Stacey, Area 2 SU4343, SU4342, John Moon 20 Aug 2025.

***Cyrtomium fortunei* (Fortune's Holly-fern)** St John's Church, Winchester SU490293, one plant in east graveyard, Anna Stewart 30 Sep 2025.

***Daboecia cantabrica* (St Dabeoc's Heath)** Bramshott Common SU857327, among Silver Birch (young plants) scrub beside track, Nick Aston 22 Aug 2025.

***Datura stramonium* (Thorn-apple)** Foley Manor SU8295 3027, several plants along edge of maize crop beside path, Tony Mundell & Cathy Wilson 25 Aug 2025. S of Burghclere SU4764 6025, at least 50 fruiting plants in corner of maize field and extending into the crop, Tony Mundell & Mike Marshall 12 Sep 2025.

***Digitaria sanguinalis* (Hairy Finger-grass)** S of Eversley SU7774 6144, several plants on road verge, north side of road, Tony Mundell & Mike Marshall 8 Sep 2025. S of Burghclere SU4764 6025, many plants in corner of maize field and extending into the crop, Tony Mundell & Mike Marshall 12 Sep 2025.

***Diplotaxis tenuifolia* (Perennial Wall-rocket)** Field south of Bramdown Copse, west headland SU525470, probably sown in pheasant mix, Jon Moon 29 Sep 2025.

***Echinochloa crus-galli* (Cockspur)** Ashmansworth SU4214 5768, arable field edge, several plants, Tony Mundell & Dave Pearson 28 Jul 2025. NE of Cole Henley SU4770 5240, many plants in an arable field corner near a roadside gate, extending onto the road verge, Tony Mundell & Dave Pearson 22 Aug 2025. Foley Manor SU8295 3027, several plants along edge of maize crop beside path, Tony Mundell & Cathy Wilson 25 Aug 2025. E of Burghclere SU4879 6115, many flowering plants scattered inside a maize field, possibly as a seed contaminant, also S of Burghclere SU4764 6025, many flowering plants scattered inside a maize field, Tony Mundell & Mike Marshall 12 Sep 2025.

***Echinops bannaticus* (Blue Globe-thistle)** St Giles Hill Graveyard SU490293, self-seeded, Anna Stewart & Alison Chase 6 Aug 2025.

***Elatine hexandra* (Six-stamened Waterwort)** Fleet Pond SU8243 5500, several plants found, some very tiny, now in fruit on the mud as water level is very low, Tony Mundell, Jon Wells & Lily Walwin 12 Aug 2025.



**Six-stamened Waterwort *Elatine hexandra*, Fleet Pond. Tony Mundell**

***Eleocharis acicularis* (Needle Spike-rush)** Fleet Pond, thriving at SU8243 5500, SU8243 5501, SU8242 5503 and SU8246 5498, though now on mud as water level is so low, Tony Mundell, Jon Wells & Lily Walwin 12 Aug 2025.

***Eleogiton fluitans* (Floating Club-rush)** Fleet Pond SU8243 5500, many patches of plants especially in the adjacent reed beds, Tony Mundell, Jon Wells & Lily Walwin 12 Aug 2025.

***Elymus caninus* (Bearded Couch)** NE of Cole Henley SU4754 5202, SU4779 5292, on roadside verge, Tony Mundell & Dave Pearson 22 Aug 2025. N of Upton Grey SU6949, Tony Mundell & Mike Marshall 22 Sep 2025.

***Epipactis purpurata* (Violet Helleborine)** Wyke Green SU7206 2633, two plants c.1m apart on the verge of Soalwood Lane, just outside the entrance to Pipers Farm. One has 4 spikes, the other with 13 spikes, but sadly all the tops have been eaten off, Tony Mundell 26 Aug 2025.



***Equisetum sylvaticum* (Wood Horsetail)** Beacon Hill, Ewshot SU8238 5047, still locally abundant, occupying about 10m × 10m in a slowly-flowing swamp fed by a spring at the top of a ditch. Threatened by deep shade and saplings of *Tsuga heterophylla*, but conservation work is planned. It was first recorded here in 1960. Tony Mundell & David Boddy 13 Oct 2025.

***Erigeron karvinskianus* (Mexican Fleabane)** Blackwater SU8465 5922, corner of Belvedere Court, Tony Mundell & Mike Marshall 23 Jul 2025. St Giles Hill Graveyard SU490293, one plant flowering, Anna Stewart & John Poland 20 Aug 2025.

***Erodium moschatum* (Musk Stork's-bill)** Winnall SU4904 2974, Anna Stewart 1 Aug 2025. S of Eversley SU7755 6144, at roadside at start of footpath going north, Tony Mundell & Mike Marshall 8 Sep 2025.

***Euonymus latifolius* (Large-leaved Spindle)** Swampton, SU413506, well established, John Poland 1 Nov 2025.



Large-leaved Spindle *Euonymus latifolius*, Swampton, St Mary Bourne. John Poland

***Euphorbia exigua* (Dwarf Spurge)** W of Crondall SU7836 4860, in extraordinary abundance, with thousands of plants, beside a footpath at the edge of a completely failed crop of Broad Beans, due to the drought, Tony Mundell 18 Jul 2025. Westover Farm, Clover Field SU355412, abundant along NW margin of field, John Moon 29 Jul 2025. Westover Farm, Gypsy Lane Field SU347405, John Moon 4 Aug 2025.

***Euphorbia oblongata* (Balkan Spurge)** Quarley Churchyard SU272439, John Moon 18 Jul 2025.

***Filago germanica* (Common Cudweed)** Foley Manor SU8208 3055, abundant in horse paddock, Tony Mundell, Cathy Wilson & Isobel Girvan et al 24 Jul 2025.

***Filago lutescens* (Red-tipped Cudweed)** Broomhurst Farm, road verge SU8125 5637, only a single very dried-up plant, a few centimetres tall, could be found, due to the current drought conditions, David Leadbetter 17 Jul 2025.

***Filago pyramidata* (Broad-leaved Cudweed)** Long Valley, Bourley SU8398 5145, small sample taken of a capitulum. Found to have five bisexual florets (*F. germanica* has four or fewer). High resolution images of florets sent to Tim Rich and identification of *F. pyramidata* confirmed. Likely to be further plants at this location, and possibly elsewhere. Habitat of damp sandy soils appears suitable and use as military vehicle training area suggests potential route of 'introduction' cf. population on Salisbury Plain training area near Tidworth, discovered 2013, Tristan Norton 20 Jul 2025.

***Filipendula vulgaris* (Dropwort)** Porton Down, Martin's Field SU250389, Anne Appleyard, Ailsa McKee & Pat Woodruffe 11 Oct 2025.

***Forsythia suspensa* (Golden-bell)** Winchester, St Giles Hill graveyard SU490294, rooted from neighbours garden, Anna Stewart & Dominic Hiscock 18 Aug 2025.

***Forsythia × intermedia* (Forsythia)** MOD Barton Stacey, Area 2 SU4342, John Moon 20 Aug 2025.

***Fumaria densiflora* (Dense-flowered Fumitory)** South Wonston SU4619 3553, maize field to S of South Wonston, Tristan Norton 14 Aug 2025. NE of Cole Henley SU4752 5297, a few plants on the edge of the arable field beside the footpath, with *Thlaspi arvense* nearby, Tony Mundell & Dave Pearson 22 Aug 2025. South Wonston SU474355, several large plants in sown cover crop, Tristan Norton 8 Nov 2025.

***Fumaria parviflora* (Fine-leaved Fumitory)** Westover Farm, Dipden Bottom Field SU345401, a few plants, John Moon 4 Aug 2025.

***Galinsoga parviflora* (Gallant Soldier)** Wyke Green SU7217 2665, many flowering plants on a soil spoil heap close to the public footpath. One capitula dissected to confirm identity, Tony Mundell 26 Aug 2025.

***Galinsoga quadriradiata* (Shaggy Soldier)** S of Burghclere SU4764 6025, many plants in corner of maize field and extending into the crop, Tony Mundell & Mike Marshall 12 Sep 2025.

***Galium × pomeranicum* (*G. verum* × *album*)** Quarley Churchyard SU272439, John Moon 18 Jul 2025. Westover Farm, Clover Field SU3555 4080, several plants close together, John Moon 29 Jul 2025.

***Gaultheria shallon* (Shallon)** Hawley SU8510 5791, a huge patch 20m across, Tony Mundell 25 Jul 2025.

***Geranium columbinum* (Long-stalked Crane's-bill)** Upper Cranbourne Farm, Freefolk Field, northern edge SU504438, occasional on overgrown headland, John Moon 29 Sep 2025.

***Geranium pusillum* (Small-flowered Crane's-bill)** Bramshill SU7532 6088, on roadside verge. Flowers with only 5 stamens, petiole hairs patent and only c. 0.15mm long, Tony Mundell & Mike Marshall 8 Sep 2025.

***Glebionis segetum* (Corn Marigold)** Easton SU5209 3229, one flowering plant on the verge of Avington Park Lane, Dave Pearson 18 Oct 2025.

***Helictochloa pratensis* (Meadow Oat-grass)** Quarley Churchyard SU272439, John Moon 18 Jul 2025.

***Helleborus foetidus* (Stinking Hellebore)** Porton Down, Isle of Wight Wood SU2537 3721, SU2539 3729, SU2567 3692 & SU2567 3720, Anne Appleyard & Ailsa McKee 18 Oct 2025. Porton Down, Roche Court Down SU2473 3677, several plants under beech, also SU2475 3680, several under blackthorn, Anne Appleyard & Pat Woodruffe 25 Oct 2025.

***Helleborus orientalis* (Lenten-rose)** St Giles Hill Graveyard SU490293, Anna Stewart & Alison Chase 6 Aug 2025.

***Hieracium argutifolium* (Sharp-toothed Hawkweed)** Hawley, Fernhill Lane SU852581, many plants at the junction of Fernhill Lane and Fernhill Road, Tony Mundell & Mike Marshall 23 Jul 2025, pressed specimen identified by Brian Burrow Oct 2025.

***Hieracium mammidens* (Breast-toothed Hawkweed)** Caesar's Camp, nr. Aldershot SU8375 5025, several plants still visible at the top of the very steep gravel gully that descends from the extreme NE corner of the high plateau, also at SU8376 5023, plants still visible beneath the Chestnut tree on the very steep side of the plateau, Tony Mundell & David Boddy 13 Oct 2025.

***Hordelymus europaeus* (Wood Barley)** Ackender Wood, Alton SU7017 3868, two spikes on woodland side of footpath, Dave Pearson 18 Jul 2025.

***Hylotelephium telephium* (Orpine)** S of Burghclere, many plants along road verge from SU4723 6117 to SU4723 6111, Tony Mundell & Mike Marshall 12 Sep 2025.

***Hypericum elodes* (Marsh St John's-wort)** Hawley Common SU8376 5810, a few surviving plants in dry ditch beside the main track, Tony Mundell & Jonathan Sleath 2 Oct 2025.

***Hypericum maculatum* subsp. *obtusiusculum* (Imperforate St John's-wort)** E of Abbotstone SU5734, Laura Gravestock 26 Jul 2025.

***Hypericum tetrapterum* (Square-stalked St John's-wort)** E of Abbotstone SU5734, Laura Gravestock 26 Jul 2025. Leckford Golf Course SU367367, Anna Stewart & Dave Pearson 6 Aug 2025.

***Hypericum* × *inodorum* (Tall Tutsan *H. androsaemum* × *hircinum*)** St Giles Hill Graveyard SU490293, Anna Stewart & Alison Chase 6 Aug 2025.



**Wood Barley *Hordelymus europaeus*, Ackender Wood, Alton. Dave Pearson**

***Illecebrum verticillatum* (Coral-necklace)** Woolmer Pond SU7889 3188, a patch of flowering plants close to the edge of the pond, occupying about 5 square metres, Ian Newell 5 Oct 2025.

***Isolepis setacea* (Bristle Club-rush)** Foley Manor SU8218 3086, at least 2 clumps in ditch at field edge, Tony Mundell, Cathy Wilson & Isobel Girvan et al 24 Jul 2025.

***Juniperus communis* (Juniper)** Leckford Golf Course SU3670 3673, three young plants under beech, possibly 5 yrs old, also at SU3675 3663, many mature plants on slope, 6 Aug 2025.

***Kickxia elatine* (Sharp-leaved Fluellen)** Beechenwood Farm area, many dozens of plants from the start of the footpath at SU7668 4983 south to at least SU7668 4975, also SU7615 4971, abundant but recently sprayed, Tony Mundell 16 Jul 2025. Westover Farm, Gypsy Lane Field SU347405, John Moon 4 Aug 2025. MOD Barton Stacey, Area 2 SU4343, John Moon 20 Aug 2025.

***Kickxia spuria* (Round-leaved Fluellen)** Hook SU7227 5562, arable field, seems much less frequent than *K. elatine* around Hook, Mike Marshall 22 Jul 2025. Westover Farm, Clover Field SU355412, abundant, John Moon 29 Jul 2025. Westover Farm, Dipden Bottom Field SU345401, John Moon 4 Aug 2025.

***Koeleruteria paniculata* (Pride-of-India)** St Giles Hill Graveyard SU490293, two self-seeded plants from tree in neighbour's garden, Anna Stewart & Alison Chase 6 Aug 2025

***Lamium amplexicaule* (Henbit Dead-nettle)** NE of Cole Henley SU4772 5279, many plants in a sown conservation area of an arable field, Tony Mundell & Dave Pearson 22 Aug 2025. Field south of Bramdown Copse, north headland SU528470, John Moon 29 Sep 2025. Crawley SU419360, Tristan Norton 18 Oct 2025. South Wonston SU473355, occasional in weedy margin, Tristan Norton 8 Nov 2025.



***Lepidium campestre* (Field Pepperwort)** MOD Barton Stacey, Area 2 SU4353 4305, single plant, John Moon 20 Aug 2025.

***Linaria repens* (Pale Toadflax)** Chalk grassland, disused railway embankment, near Larkwhistle Farm SU448448, Nick Aston 9 Sep 2025.

***Linaria* × *sepium* (*L. repens* × *L. vulgaris*)** Chalk grassland, disused railway embankment, near Larkwhistle Farm, Longparish SU4488 4486, Nick Aston 9 Sep 2025.



**Hybrid of Pale Toadflax and Common Toadflax**  
***Linaria* × *sepium*, Longparish. Nick Aston**

***Linum bienne* (Pale Flax)** Long Valley SU836515, a few plants on edge of rutted track, Tristan Norton 17 Aug 2025.

***Lithospermum officinale* (Common Gromwell)** The Wakes Estate, Selborne SU7412 3354, linked with observation of *Ethmia dodecea* (a micro moth whose larvae feed on *L. officinale*), Chris Piper 18 Jul 2025.

***Littorella uniflora* (Shoreweed)** Fleet Pond, Gelvert Marsh, hundreds of plants that extend from SU8247 5497 to SU8245 5499, many more at SU8248 5496 and SU8247 5494, Tony Mundell, Jon Wells & Lily Walwin 12 Aug 2025.

***Lonicera maackii* (Amur Honeysuckle)** Magdalen Hill Down SU4981 2924, one very large bush in a hedge, David Leadbetter 14 Aug 2025.

***Luzula forsteri* (Southern Wood-rush)** West Green House SU7437 5620, several plants growing with a few *Luzula pilosa* on the grassy bank close to the SW corner of the lake, where a planted conifer grows out to hang over the lake, also SU7442 5631 many flowering/fruitlet plants beside a path in the garden, Tony Mundell 6 Sep 2025.

***Lycium barbarum* (Duke of Argyll's Teaplat)** St Giles Hill Graveyard SU490293, one plant, Anna Stewart & Alison Chase 6 Aug 2025.

***Lycopodiella inundata* (Marsh Clubmoss)** All records by Holly Stanworth 1 Oct 2025. Wellington Valley Ponds introduction, 14 plants at SU77845 59030. Plants looking healthy, 4 strobili, look to be spreading from original turves. 1 small plant at SU77824 58961 in turf above marker. Looks as though the plants have died in the drought. Some still evident

but brown and dead looking. Evidence of strobili, but none alive and sporing. 6 very small plants at SU77837 59043. Area being engulfed by sphagnum, no strobili. Ponds are much shallower than normal. Very dry and hot year. Warren Bottom introduction, 22 plants at SU78144 58808, still in two distinct turves, but plants spreading out from original turves. No strobili but plants looking healthy. 7 plants at SU78182 58839, no strobili. Looks as though plants have maybe dried out, still present but most are brown and dead looking. Surviving plants are very small. 9 small plants at SU7814 5881, looks as though one is spreading out from the original turf. No strobili.

***Lycopsis arvensis* (Bugloss)** Foley Manor, SU8268 2987, a single flowering plant in a sandy field, Tony Mundell & Cathy Wilson 4 Aug 2025. S of Eversley SU7743 6116, over 20 plants in sandy soil beside footpath, Tony Mundell & Mike Marshall 8 Sep 2025. Field south of Bramdown Copse, west headland SU525470 and at SU528470 on the north headland, abundant this year, John Moon 29 Sep 2025.

***Matricaria chamomilla* (Scented Mayweed)** W of Preston Candover SU580410, Anna Stewart & Dave Pearson 15 Aug 2025.

***Mentha arvensis* (Corn Mint)** S of Burghclere SU4777 6027, many plants scattered along arable field edge beside footpath, Tony Mundell & Mike Marshall 12 Sep 2025.

***Mercurialis annua* (Annual Mercury)** Over Wallop SU2839, John Moon 12 Aug 2025. Basingstoke SU6160 5045, many dozens of plants as a pavement weed beside High Drive and in numerous other places beside this road, Tony Mundell 5 Sep 2025. N of Upton Grey SU6921 4977, by a farm building, Tony Mundell & Mike Marshall 22 Sep 2025.

***Mespilus germanica* (Medlar)** Quarley Churchyard SU272439, planted, John Moon 18 Jul 2025.

***Misopates orontium* (Weasel's-snout)** St Giles Hill Graveyard SU490293, Anna Stewart & Alison Chase 6 Aug 2025.

***Myriophyllum spicatum* (Spiked Water-milfoil)** River Loddon, Sherfield on Loddon SU6830 5832, locally abundant in the river. Leaves 4 whorled, 1.8cm long with 16 lobes per side and 14 hollows in the 1.4mm - 2.0mm diam. stems, Tony Mundell 7 Aug 2025.

***Nepeta cataria* (Cat-mint)** Westover Farm, Clover Field SU3561 4089, several plants close together, John Moon 29 Jul 2025.

***Nicandra physalodes* (Apple-of-Peru)** St Giles Hill Graveyard SU491294, Anna Stewart & Paul Hamilton 8 Aug 2025. Basingstoke SU6114 5010, on a large heap of disturbed soil in an area of wasteland awaiting development, Tony Mundell 5 Sep 2025.

***Ononis spinosa* (Spiny Restharrow)** Leckford Golf Course SU367367, Restharrow with spines, Anna Stewart & Dave Pearson 6 Aug 2025.

***Ophrys apifera* (Bee Orchid)** Winnall SU4919 2975, two mature rosettes, and SU4928 2966, ten mature rosettes in lawn, Anna Stewart & Rachel Remnant 28 Oct 2025.

***Orobanche elatior* (Knapweed Broomrape)** N of Upton Grey SU6924 4962 & SU6954 4926, beside public footpath



**Cat-mint *Nepeta cataria*, Westover Farm, Goodworth Clatford. John Moon**

on Greater Knapweed, Tony Mundell & Mike Marshall 22 Sep 2025.

***Orobanche hederæ* f. *monochroa* (Ivy Broomrape)** SE of Abbotstone Down SU5970 3567, yellow form, woodland strip along edge of road, Laura Gravestock 27 Jul 2025.

***Osmunda regalis* (Royal Fern)** Fleet Pond, Gelvert Marsh SU8248 5491, at least 6 plants here, Tony Mundell, Jon Wells & Lily Walwin 12 Aug 2025.

***Oxybasis glauca* (Oak-leaved Goosefoot)** S of Up Green SU7904 6039, locally abundant fruiting plants. I followed up a record from 2016 reported in Hampshire's Flora News. The original site is now given over to pasture with no *Chenopodium* plants found. I walked further down the track, finding it in a field that has been trampled by livestock, David Caals 27 Aug 2025.

***Parthenocissus inserta* (False Virginia-creeper)** Beechenwood Farm area SU7619 4963, climbing up hedgerow close to farm house, Tony Mundell 16 Jul 2025. Hawley SU8590 5729, on the west bank of Cove Brook Tony Mundell 25 Jul 2025. Basingstoke SU6157 4918, on roadside verge escaped from housing, Tony Mundell 18 Aug 2025.

***Petasites pyrenaicus* (Winter Heliotrope)** Faccombe SU389580, in lane by houses, Carolyn Doorbar 21 Jul 2025.

***Phalaris paradoxa* (Awned Canary-grass)** Westover Farm, Gypsy Lane Field SU347405, John Moon 4 Aug 2025.

***Phedimus spurius* (Caucasian-stonecrop)** St Giles Hill graveyard SU490294, Anna Stewart & Dominic Hiscock 18 Aug 2025.

***Pilularia globulifera* (Pillwort)** Fleet Pond, thriving at SU8243 5500, SU82435501, SU8242 5503, though now on mud as water level is so low, Tony Mundell, Jon Wells & Lily Walwin 12 Aug 2025.

***Poa compressa* (Flattened Meadow-grass)** Leckford Golf Course SU3670 3673, Anna Stewart & Dave Pearson 6 Aug 2025.

***Poa humilis* (Spreading Meadow-grass)** Leckford Golf Course SU3670 3673, Anna Stewart & Dave Pearson 6 Aug 2025. Cole Henley, Paul's Heath SU4727 5130, Tony Mundell & Dave Pearson 22 Aug 2025. N of Upton Grey SU6946 4941, on side of footpath track, lowest node of inflorescence with only 1 or 2 branches, Tony Mundell & Mike Marshall 22 Sep 2025.

***Polygonum rurivagum* (Cornfield Knotgrass)** MOD Barton Stacey, Area 2 SU436431, on rough open ground, John Moon 20 Aug 2025.

***Polystichum aculeatum* (Hard Shield-fern)** Ashmansworth, at least 12 plants on roadside bank from SU4273 5734 to SU4276 5730, Tony Mundell & Dave Pearson 28 Jul 2025. Gore End, on roadside growing with *P. setiferum* at SU4147 6320, SU4126 6380 & SU4151 6323, Tony Mundell 4 Sep 2025. S of Burghclere, on road verge at SU4703 6031 & SU4708 6036, Tony Mundell & Mike Marshall 12 Sep 2025.

***Potentilla anglica* (Trailing Tormentil)** Blackwater SU8484 5902, beside main track, Tony Mundell & Mike Marshall 23 Jul 2025. Bramshill SU7592 6082, SU7579 6070, beside footpath, seeds present so not a hybrid, Tony Mundell & Mike Marshall 8 Sep 2025. Hawley Common SU8330 5760, at least one plant beside a minor track growing with many *Potentilla erecta* and *P. reptans*, Tony Mundell & Jonathan Sleath 2 Oct 2025.

***Potentilla indica* (Yellow-flowered Strawberry)** St Giles Hill Graveyard SU490293, one plant, Anna Stewart 30 Sep 2025.

***Prunus domestica* (Wild Plum)** Upper Wield SU6320 3886, medium-sized tree in woodland around bridleway to north-east of village, Dave Pearson 4 Sep 2025.

***Ranunculus lingua* (Greater Spearwort)** Hawley SU8587 5722, SU8597 5752 & SU8601 5760, in Cove Brook here and in many other places, Tony Mundell 25 Jul 2025. Fleet Pond SU8182 5492, single plant hanging on beside the boat landing area, Tony Mundell, Jon Wells & Lily Walwin 12 Aug 2025.



**Greater Spearwort *Ranunculus lingua*, Hawley. Tony Mundell**



***Ranunculus sceleratus* (Celery-leaved Buttercup)** Roke Farm area SU7619 4910, many flowering plants in pond beside road, Tony Mundell 16 Jul 2025.

***Roemeria hispida* (Rough Poppy)** Westover Farm, Gypsy Lane Field SU347405, John Moon 4 Aug 2025. Field south of Bramdown Copse, north headland SU528470, John Moon 29 Sep 2025.

***Rorippa palustris* (Marsh Yellow-cress)** Itchen Stoke SU555321, one plant just east of Itchen Way where it crosses wet pasture, Dave Pearson 27 Jul 2025.

***Rosa canina* × *micrantha* (*Rosa* × *toddiae* (f × m))** Porton Down, opp. Peter's Piece, Anne Appleyard, Ailsa McKee & Pat Woodruffe 11 Oct 2025. [*R. canina* as female parent]

***Rosa micrantha* (Small-flowered Sweet-briar)** N of Upton Grey SU6940 4951, single bush in hedgerow just off the public footpath, growing with *Rosa canina*, Tony Mundell & Mike Marshall 22 Sep 2025.

***Rosa micrantha* × *canina* (*Rosa* × *toddiae* (f × m))** Porton Down, opp. Peter's Piece, Anne Appleyard, Ailsa McKee & Pat Woodruffe 11 Oct 2025. [*R. micrantha* as female parent]

***Rosa multiflora* (Many-flowered Rose)** Hawley SU8590 5852, at edge of car park for Hawley Farm Country Park, Tony Mundell & Mike Marshall 23 Jul 2025.

***Rosa rubiginosa* (Sweet-briar)** Elvetham Heath SU8053 5573, several plants along the edge of a balancing pond, presumably originally planted, Tony Mundell, Jon Wells & Lily Walwin 12 Aug 2025. Porton Down, opp. Peter's

Piece SU2519 3911, Anne Appleyard, Ailsa McKee & Pat Woodruffe 11 Oct 2025.

***Rosa* × *irregularis* (*Rosa arvensis* × *canina* (fxm or mxf))** Wyke Green SU7270 2689, climbing up to the top of the roadside hedgerow. Main stems too thick and robust for *R. arvensis*. Groups of hips typical of the hybrid with many of them aborted, Tony Mundell 26 Aug 2025.

***Salvia nemorosa* (Balkan Clary)** Basingstoke SU6110 5040, two flowering plants in grassy area near the sports field car park. Voucher specimen of a piece of one stem collected, Tony Mundell 5 Sep 2025.

***Sanguisorba officinalis* (Great Burnet)** Hawley Meadows SU858593, Sara Green 1 Sep 2025.

***Saururus cernuus* (Lizard's-tail)** Foley Manor SU8300 3071, now completely surrounds this pond in a strip several metres wide, Tony Mundell & Cathy Wilson 4 Aug 2025. Foley Manor pond, Liphook SU8303 3073, rampant around pond, extending into woodland margins, Nick Aston 26 Sep 2025.

***Scabiosa columbaria* (Small Scabious)** Quarley Churchyard SU272439, John Moon 18 Jul 2025. Leckford Golf Course SU367367, Anna Stewart & Dave Pearson 6 Aug 2025.

***Schoenoplectus tabernaemontani* (Grey Club-rush)** Elvetham Heath SU8035 5543, many flowering plants in a balancing pond, Tony Mundell, Jon Wells & Lily Walwin 12 Aug 2025.



Lizard's-tail *Saururus cernuus*, Foley Manor, Liphook. Tony Mundell



***Sedum sexangulare* (Tasteless Stonecrop)** St Giles Hill graveyard SU490294, Anna Stewart & Dominic Hiscock 18 Aug 2025.

***Setaria pumila* (Yellow Bristle-grass)** St Giles Hill graveyard SU490294, Anna Stewart & Dominic Hiscock 18 Aug 2025. NE of Cole Henley SU4770 5240, hundreds of plants in an arable field corner near a roadside gate, Tony Mundell & Dave Pearson 22 Aug 2025. Foley Manor SU8288 3027, abundant along edge of maize crop with some plants even in the middle of the adjacent grassy track, Tony Mundell & Cathy Wilson 25 Aug 2025. South Wonston SU4742 3554, abundant, presumably as contaminant, in field sown with Chenopods, Gold-of-Pleasure, Common Amaranth etc, Tristan Norton 30 Aug 2025. E of Burghclere SU4879 6115, many flowering plants scattered inside a maize field, presumably as a seed contaminant, Tony Mundell & Mike Marshall 12 Sep 2025. Field south of Bramdown Copse, west headland SU525470, probably sown in pheasant mix, John Moon 29 Sep 2025. Larkwhistle Farm, Longparish SU448448, frequent in field corner, Tristan Norton 17 Nov 2025.

***Silene noctiflora* (Night-flowering Catchfly)** Westover Farm, Gypsy Lane Field SU348409, around a dozen plants either side of field entrance, John Moon 4 Aug 2025.

***Silene* × *hampeana* (Pink Campion *S. dioica* × *latifolia*)** NE of Cole Henley SU4772 5279, single plant in a sown conservation area of an arable field, both parents also present, Tony Mundell & Dave Pearson 22 Aug 2025.

***Solanum nitidibaccatum* (Green Nightshade)** Wyke Green SU7217 2665, a few fruiting plants on a soil spoil heap close to the public footpath, Tony Mundell 26 Aug 2025.

***Sparganium emersum* (Unbranched Bur-reed)** Hawley SU8597 5755 & SU8606 5767, in Cove Brook, Tony Mundell 25 Jul 2025.

***Stachys arvensis* (Field Woundwort)** NE of Cole Henley SU4725 5285, a few flowering plants in an arable field corner, Tony Mundell & Dave Pearson 22 Aug 2025. E of Burghclere SU4879 6115, many flowering/fruiting plants scattered along edge of a maize field, Tony Mundell & Mike Marshall 12 Sep 2025. Field south of Bramdown Copse, north headland SU528470, many thousands have grown and flowered after rain following drought, John Moon 29 Sep 2025.

***Stachys palustris* (Marsh Woundwort)** Wyke Green SU7217 2666, a large 3m × 2m flowering patch on one of three spoil heaps of soil or manure, close to the public footpath, Tony Mundell 26 Aug 2025.

***Thelypteris palustris* (Marsh Fern)** Fleet Pond SU8180 5497, many plants rather hidden beneath the reeds. Spores now forming, Tony Mundell, Jon Wells & Lily Walwin 12 Aug 2025. Foley Manor SU8225 3027, in Reedy Copse, first found here by ecologist for South Downs National Park, Paul Whitby 13 Aug 2025. Foley Manor SU8220 3013, SU8220 3016, SU8221 3016, SU8222 3016, SU8222 3017, SU8224 3027, SU8224 3029, SU8225 3027, SU8225 3029, are examples of its many locations in Reedy Copse, Tony Mundell & Cathy Wilson 25 Aug 2025.

***Thesium humifusum* (Bastard-toadflax)** Leckford Golf Course SU3671 3671, a large area 30m x10m where

this plant is dominant. Impressive, Anna Stewart & Dave Pearson 6 Aug 2025.

***Thlaspi arvense* (Field Penny-cress)** NE of Cole Henley, many thousands of flowering or fruiting plants extending for 694m along the edge of an arable field beside the footpath, centred on SU4769 5306, and from SU4799 5324 to SU4739 5289, densest in the NE half, Tony Mundell & Dave Pearson 22 Aug 2025.

***Trifolium incarnatum* subsp. *incarnatum* (Crimson Clover)** Trooper Bottom SU7299 2748, many plants beside footpath by arable fields in a sown 'conservation' strip, Tony Mundell 26 Aug 2025.

***Tripleurospermum inodorum* (Scentless Mayweed)** Foley Manor SU8269 2986, a remarkable double-flowered form on a sandy track a few metres from a gateway, photographed, Tony Mundell & Cathy Wilson 4 Aug 2025.



**Double-flowered Scentless Mayweed**  
*Tripleurospermum inodorum*, Foley Manor, Liphook.  
Tony Mundell

***Typha angustifolia* (Lesser Bulrush)** Elvetham Heath SU8035 5543, many flowering/fruiting plants in a balancing pond, with a single *T. latifolia* so hybrids may form here, Tony Mundell, Jon Wells & Lily Walwin 12 Aug 2025.

***Ulmus* × *hollandica* (Dutch Elm)** Basingstoke SU6158 5019 in woodland beside public footpath. Voucher specimen of one side shoot collected, which was scanned and identified as *Ulmus* × *hollandica* by Max Coleman, Tony Mundell 5 Sep 2025.

***Valerianella dentata* (Narrow-fruited Cornsalad)** Field south of Bramdown Copse, north headland SU528470, John Moon 29 Sep 2025.

***Verbascum blattaria* (Moth Mullein)** St Giles Hill Graveyard SU4911 2932, two very small plants, Anna Stewart & Martin Rand 17 Jul 2025.

***Verbascum chaixii* (Nettle-leaved Mullein)** St Giles Hill Graveyard SU4906 2939 & SU4910 2931, truncate or cuneate basal leaves with serrations. short pedicels. Yellow corolla with purple stamens and medifixed kidney shaped anthers. Calyx teeth linear. Stigma capitate. Plant 1m, some branching, Anna Stewart & Martin Rand 17 Jul 2025.



***Verbascum pyramidatum* (Caucasian Mullein)** N of Upton Grey SU6921 4977, beside a farm building. A single much-branched flowering plant that clearly keys to *V. pyramidatum* growing amongst several *V. thapsus*, Tony Mundell & Mike Marshall 22 Sep 2025.

***Verbascum* × *semialbum* (*V. thapsus* × *nigrum*)** St Giles Hill Graveyard SU4906 2939 & SU4910 2931, confirmed by Mike Crewe, 3 metre intermediate plant with many branches, staminal hairs mixture of white and pink, anthers medifixed kidney shaped, Anna Stewart & Martin Rand 17 Jul 2025. MOD Barton Stacey, Area 2 SU4359 4273, around 8 hybrid plants, both parents in vicinity, John Moon 20 Aug 2025.

***Veronica polita* (Grey Field-speedwell)** W of Crondall SU78404856, one plant beside a footpath at the edge of a completely failed crop of Broad Beans, due to the drought, Tony Mundell 18 Jul 2025. NE of Cole Henley SU4749 5295, a few plants on the edge of the arable field beside the footpath, with *Thlaspi arvense* nearby, Tony Mundell & Dave Pearson 22 Aug 2025.

***Vicia villosa* (Fodder Vetch)** W of Crondall SU7892 4843, several flowering plants in a separate small triangular field that had apparently previously been sown with pollinating plants, Tony Mundell 18 Jul 2025. Trooper Bottom SU7299 2748, many flowering plants beside footpath by arable fields in a sown 'conservation' strip. Photos taken, Tony Mundell 26 Aug 2025. S of Burghclere SU4777 6027, a few flowering plants on arable field edge, Tony Mundell & Mike Marshall 12 Sep 2025.

***Viola hirta* (Hairy Violet)** MOD Barton Stacey, Area 2 SU4342 & SU4343, John Moon 20 Aug 2025. Sutton Scotney Services, A34 SU4588 4000, a large patch of grassland at the Services that is heavily grazed by rabbits is developing quite a rich flora. Dozens of plants of *V. hirta*, even some flowering in October, Tony Mundell & Holly Stanworth 14 Oct 2025.

***Yucca gloriosa* (*Yucca gloriosa*)** S of Eversley SU7750 6107, three plants on bank beside footpath, Tony Mundell & Mike Marshall 8 Sep 2025.



Anna Stewart with hybrid of Great Mullein and Dark Mullein *Verbascum* × *semialbum*, St Giles Hill Graveyard, Winchester.  
Dave Stewart

**Flora News is the bi-annual newsletter of the Hampshire & Isle of Wight Wildlife Trust's Flora Group (known as the Hampshire Flora Group), a special interest wildlife group covering vascular plants, charophytes, bryophytes and lichens. Our aims are to monitor the status and promote conservation of the flora of Hampshire and develop skills of those members interested in flora.**

This edition of *Flora News* was edited and produced by John Norton. The views expressed by the editor and contributors to *Flora News* are not necessarily those of Hampshire & Isle of Wight Wildlife Trust. If you have any comments or would like to submit an article for inclusion in a future issue please contact:

**John Norton**

Editor, *Flora News*

215 Forton Road, Gosport, PO12 3HB

Tel: 07982 257746, email: [john@jnecology.uk](mailto:john@jnecology.uk)

When submitting photographs or illustrations for articles please include a small (reduced) version of the image in the article above its caption and send larger versions (no more than 5MB) directly to John Norton. Please include basic details of each image in its filename (e.g. species name, location) and full details in the caption within the article, including the name of the photographer.

The **HantsPlants** website provides news and resources for anyone with an interest in Hampshire botany and acts as a hub for all plant recording activities in the two Hampshire vice-counties. If you would like to send in your plant records, they will be welcome electronically via the Botanical Society of Britain and Ireland (BSBI) Recording App, iRecord or iNaturalist; you don't need to do anything further in that case to get them to the BSBI recorders. Please see the Hants Plants website for further information and links concerning electronic submissions. Alternatively, for small numbers of records you can write letters, email or text files or use the purpose-designed spreadsheets and Word documents on the website and send them to the relevant Vice-county Recorder:

**VC11: Tristan Norton**

Tel: 07443 519188, email: [vc11recorder@hantsplants.net](mailto:vc11recorder@hantsplants.net)

**VC12: Tony Mundell**

38 Conifer Close, Church Crookham, Fleet GU52 6LS

Tel: 01252 614516, email: [vc12recorder@hantsplants.net](mailto:vc12recorder@hantsplants.net)

[hantsplants.uk](http://hantsplants.uk)



To receive future copies of *Flora News* please send an email to [hampshirefloragroup@gmail.com](mailto:hampshirefloragroup@gmail.com) with the address line 'Flora News'. In the message body state your name (given name and surname) and (optionally) your county of residence. See the notice on p.2 for further information.

Flora Group members are welcome to join the Hampshire Flora Group Facebook group. Search for Hampshire Flora Group and click the Join button. The group is moderated, and you may have to wait a day or two to be joined up. Please read and follow the notes on what we require as joining information.



Hampshire & Isle of Wight Wildlife Trust  
Beechcroft House, Vicarage Lane, Curdridge, Hampshire SO32 2DP  
Company Limited by guarantee and registered in England and Wales No. 676313  
Registered Charity No. 201081